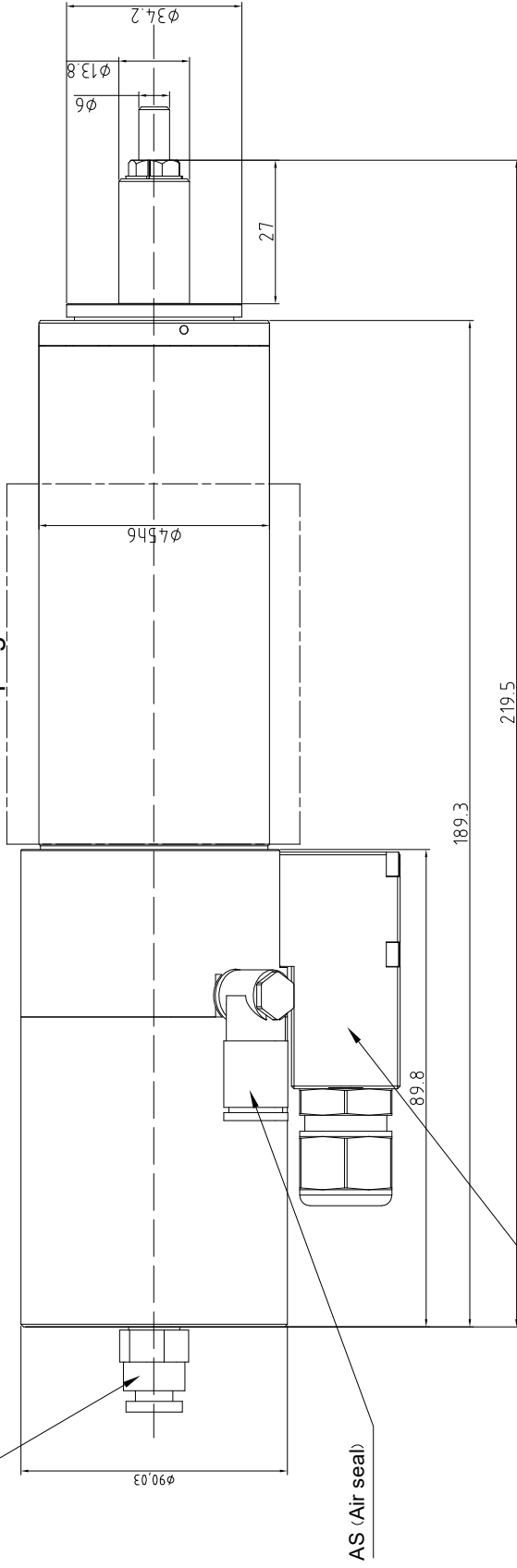
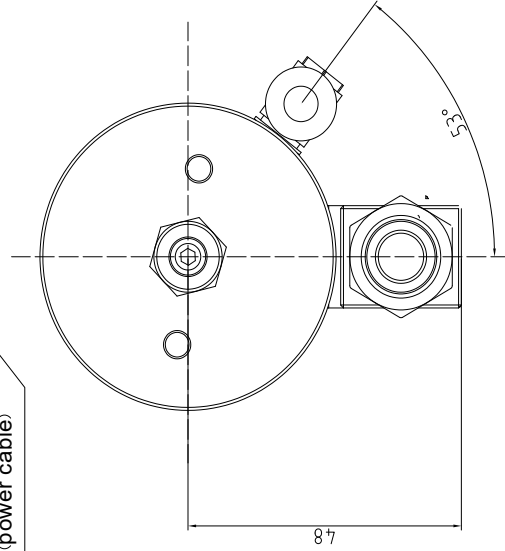


TO (unclamping(tool))

80 (clamping area)



EC (power cable)



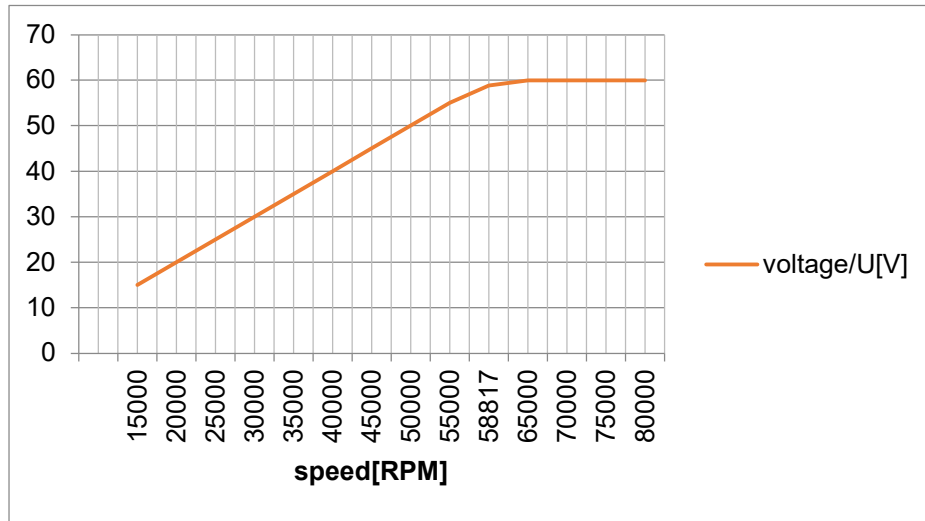
3	Power Cable (EC) & temperature		1	Motor Cable (including U,V,W,ground lead), temperature sensor(KTY) Cable length: 0.8 meters.	Function & Requirement
2	Tool Out (unclamping (TO))	Quick Connector, Connect with Ø6 pipe	1	Connected with more than 4.2 bar air to unclamp	
1	Air Seal (AS)	Quick Connector, Connect with Ø6 or Ø4 pipe	1	Connected with 70L/min(2.6-3.0 bar) should be logically turned on at the same time when machine tool turned on.	
No.	Connector Name	Type & Specification	Quantity		
INFRANOR		DGZX-04580 /0.96-PG			GZX60(20)-000

Spindle Technical Specifications

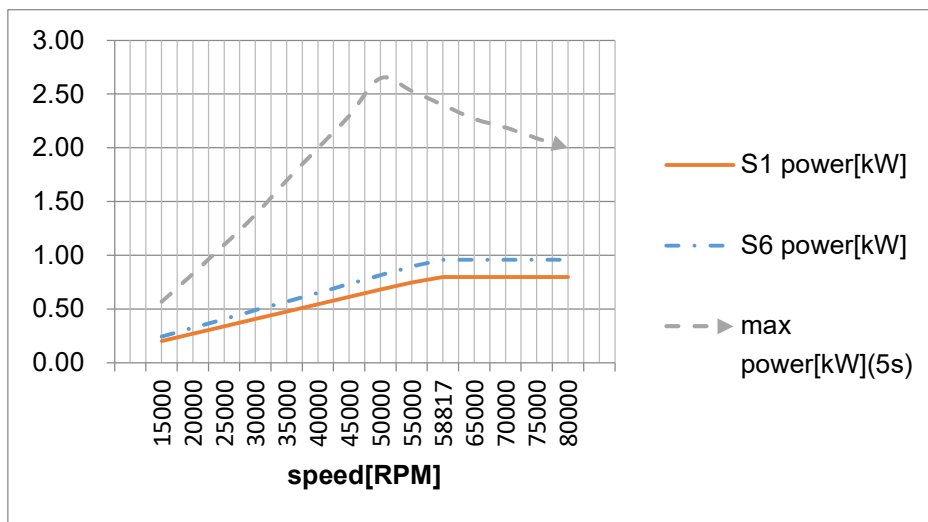
Spindle Model	DGZX-04580 / 0.96-PG		
Spindle Model	Asynchronous	Collet Type	B121 draw-in collet standard $\Phi 6$ (Option $\Phi 4$)
Max. Frequency (Hz)	1334	Max. Speed (rpm)	80000
Max. Voltage (V)	60	Max. Current (A)	34.8
Rated Power (S1-100%/ kW)	0.8	Rated Power (S6-40%/ kW)	0.96
Rated Torque (S1-100%/ N·m)	0.13	Rated Torque (S6-40%/ N·m)	0.156
Motor winding insulation resistance (M Ω)	≥ 500 (H 级)	Motor winding withstand voltage test (V/M)	500V/1min High-voltage Holding Test
Stator temperature sensor type	KTY	Tool-change	Pneumatic tool change
Motor Poles	2	Weight (Kg)	1.96
Serial number	Technical Specifications		
1	Unclamping pressure (Mpa)	0.56-0.60	
2	Chuck torque (N·cm)	$\geq 132(\Phi 6 \text{ tool})$	
3	Radial Run-out (mm)	≤ 0.005	
4	Vibration (mm/s)	≤ 1.0	
5	Noise (dB(A))	≤ 85	
6	Recommended Air Seal(L/min)	50(Air pressure:0.10-0.15MPa)	
7	Diameter(mm)	$\Phi 45h6$	

Characteristic Curve of Motor

Voltage/Speed (U/n) Curve



Power/Speed (P/n) Curve



Torque/Speed (T/n) Curve

