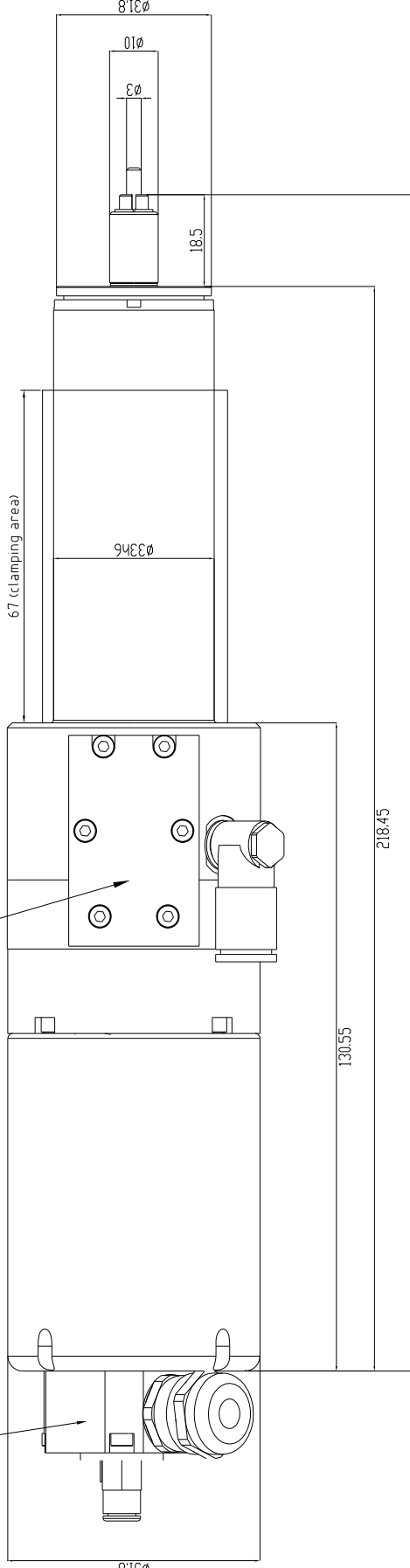
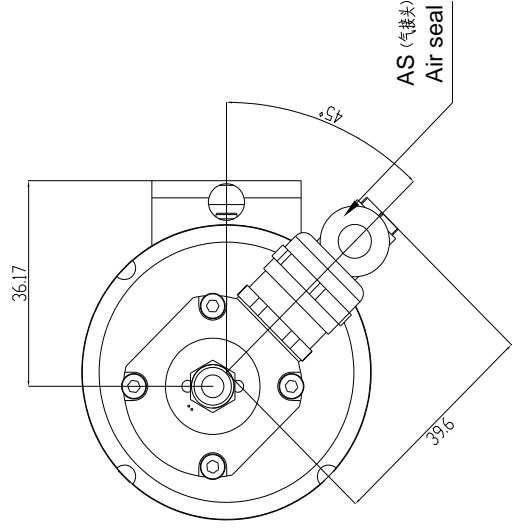


Electric linder
wire connector

EC (电源线接头)
power cable



VIEW K



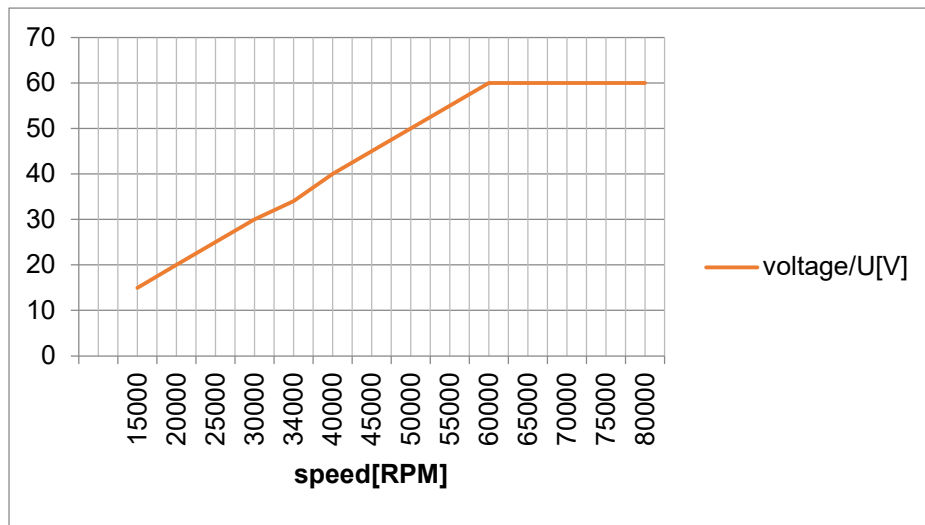
3	Power Cable (EC) & temperature		1	Motor Cable(including U,V,W,ground lead),temperature sensor(KTY) Cable length: 0.8 meters.
2	Electric linder wire connector		1	Connect to 48V DC power supply,Power-on duration shall not exceed 0.2s.
1	Air Seal (AS)	Quick Connector, Connect with Ø6	1	Connected with 0.2-0.5 bar,should be logically turned on at the same time when machine tool turned on.
No.	Connector Name	Type & Specification	Quantity	Function & Requirement
Guangzhou haozhi Industrial Co.,Ltd		DGZ-03380/0.54-MG	GZ50(12)-000-DY	

Spindle Technical Specifications

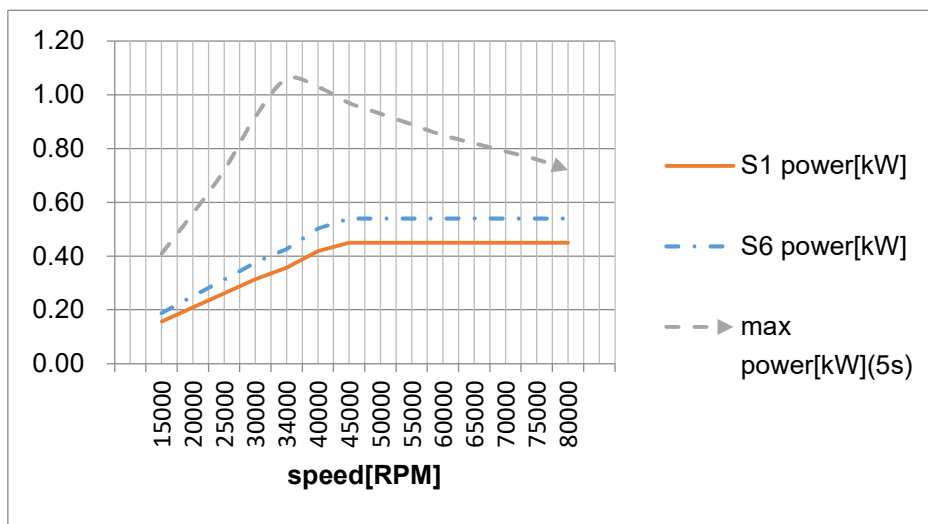
Spindle Model	DGZ-03380 / 0.54-MG		
Motor Type	Asynchronous	Collet Type	B049 draw-in collet standard $\Phi 3$ (Option $\Phi 4$)
Max. Frequency (Hz)	1334	Max. Speed (rpm)	80000
Max. Voltage (V)	60	Max. Current (A)	15.8
Rated Power (S1-100%/kW)	0.45	Rated Power (S6-40%/kW)	0.54
Rated Torque (S1-100%/N·m)	0.1	Rated Torque (S6-40%/N·m)	0.12
Motor winding insulation resistance (M Ω)	≥ 500 (H级)	Motor winding withstand voltage test (V/M)	500V/1min High-voltage Holding Test
Stator temperature sensor type	KTY	Tool-change	Electric tool change
Motor Poles	2	Weight (Kg)	1.65
Serial number	Technical Specifications		
1	Unclamping voltage (V)	DC 48(Power-on duration 0.2s)	
2	Chuck torque (N·cm)	≥ 25.4 ($\Phi 3$ tool)	
3	Radial Run-out (mm)	≤ 0.005	
4	Vibration (mm/s)	≤ 1.0	
5	Noise (dB(A))	≤ 85	
6	Recommended Air Seal(L/min)	26(0.02-0.05MPa)	
7	Diameter(mm)	$\Phi 33h6$	

Characteristic Curve of Motor

Voltage/Speed (U/n) Curve



Power/Speed (P/n) Curve



Torque/Speed (T/n) Curve

