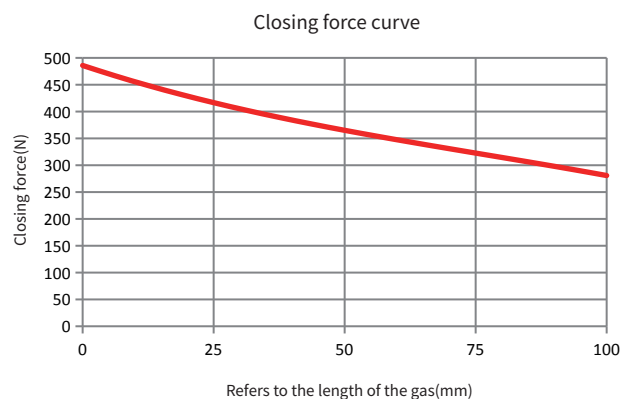
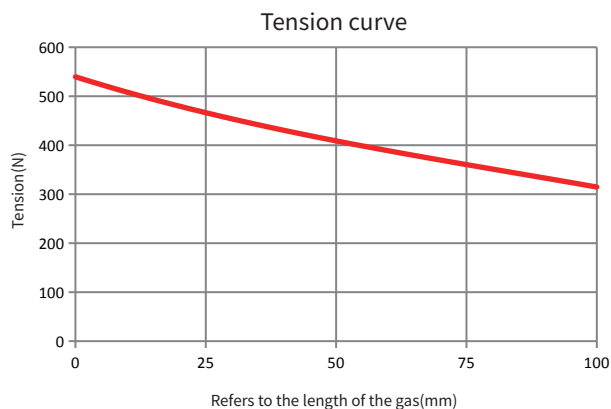


### THE GRAPH

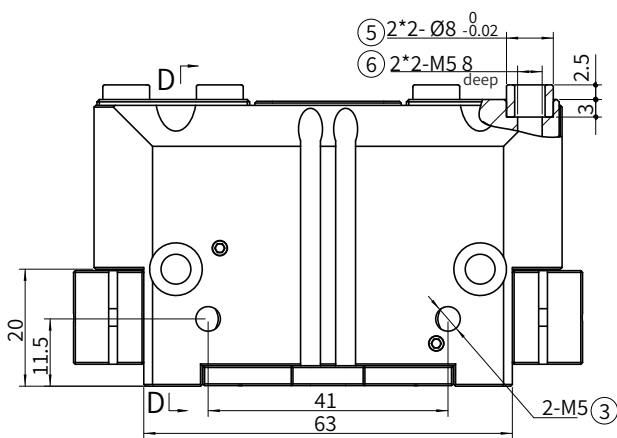
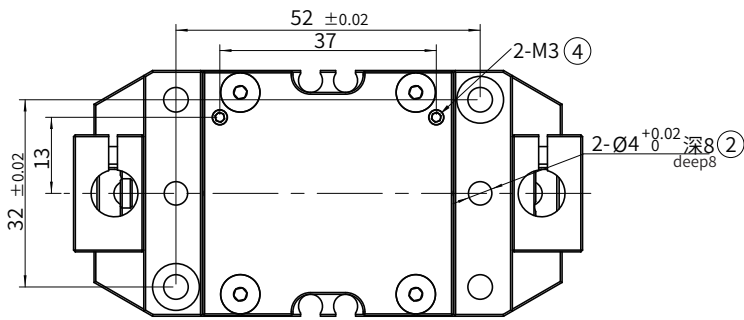


### MAIN TECHNICAL PARAMETER

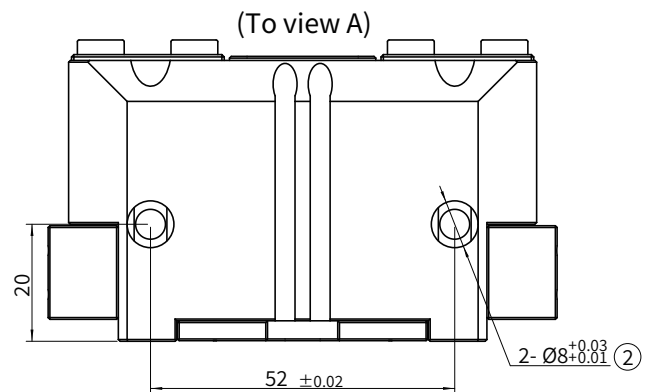
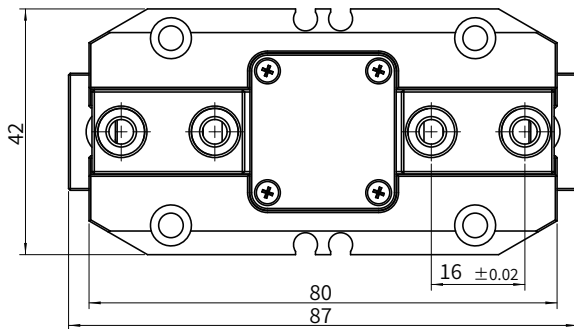
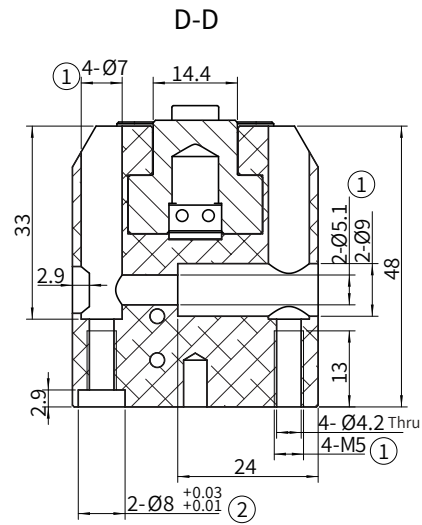
Product model	PGS-80-8
Repeated positioning accuracy (mm)	0.01
Closing force/ Tension force (N)	≥410/460
Rated working air pressure (Mpa)	0.6
Single finger stroke (mm)	8
Working air pressure range (MPa)	0.3~0.8
Recommended clamping workpiece weight (Kg)	2

# PGS-80-8

# SIZE CHART



A →



① Gas fingering mounting hole

③ Side air vent

⑤ Soft claw mounting positioning sleeve

② Gas fingering mounting positioning hole

④ Bottom air vent

⑥ Soft claw mounting hole