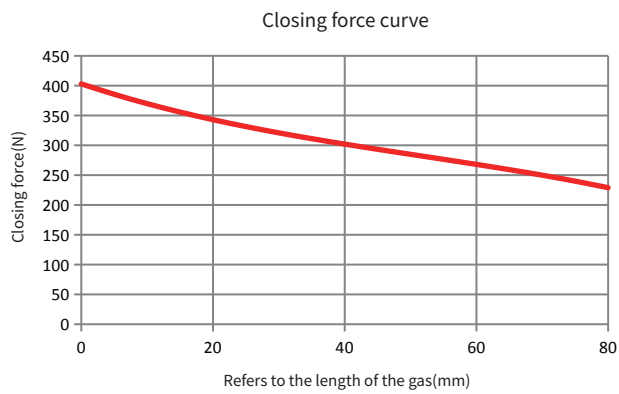
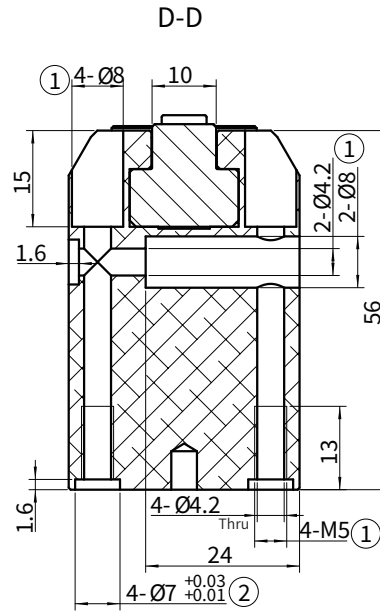
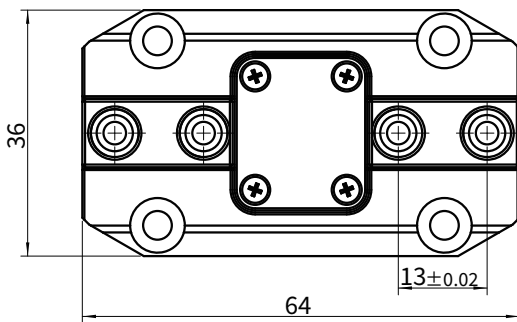
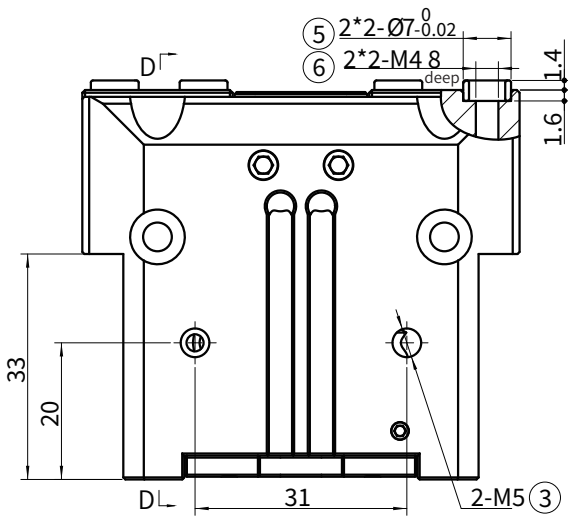
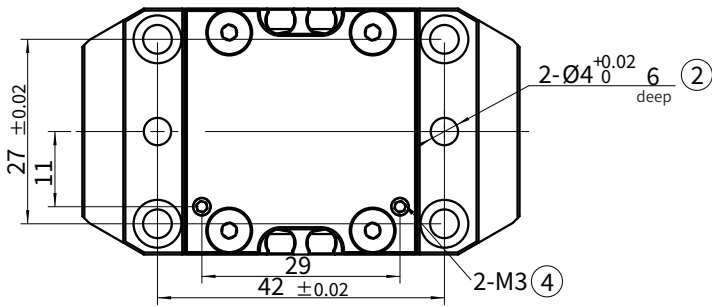


THE GRAPH

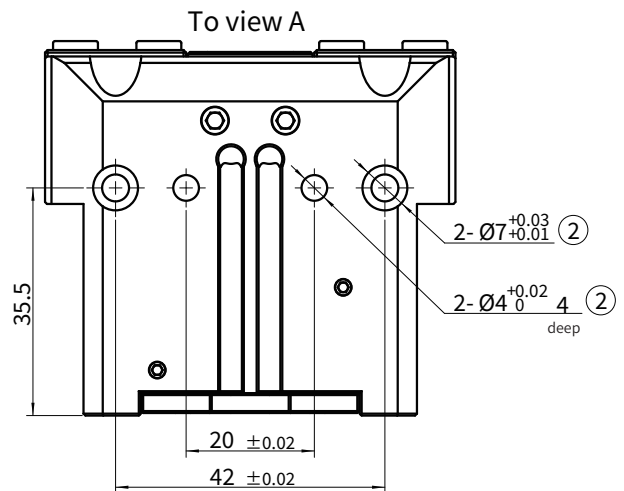


MAIN TECHNICAL PARAMETER

Product model	PGS-64-4H
Repeated positioning accuracy (mm)	0.01
Closing force (N)	≥340
Rated working air pressure (Mpa)	0.6
Single finger stroke (mm)	6
Working air pressure range (MPa)	0.3~0.8
Recommended clamping workpiece weight (Kg)	1.2



A →



① Gas fingering mounting hole

③ Side air vent

⑤ Soft claw mounting positioning sleeve

② Gas fingering mounting positioning hole

④ Bottom air vent

⑥ Soft claw mounting hole