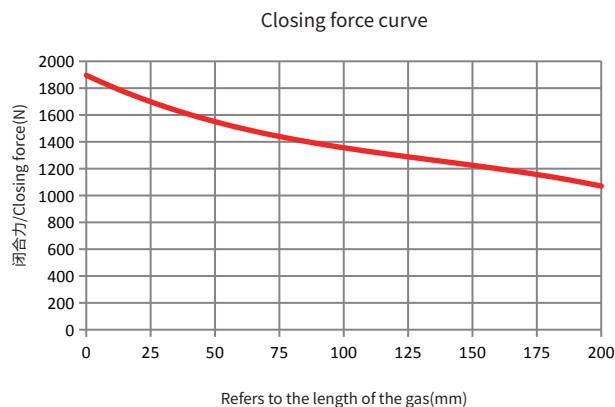
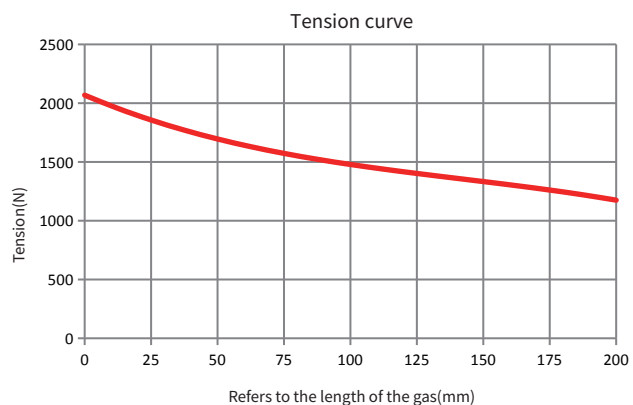


THE GRAPH

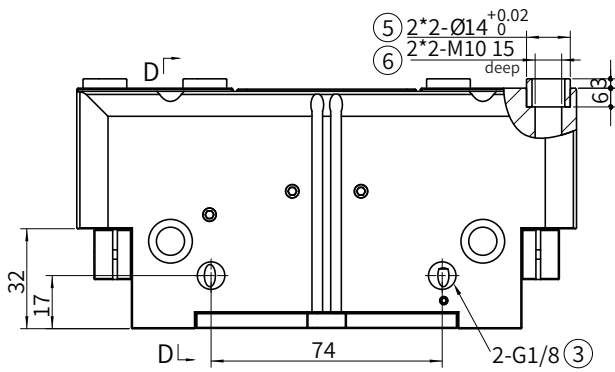
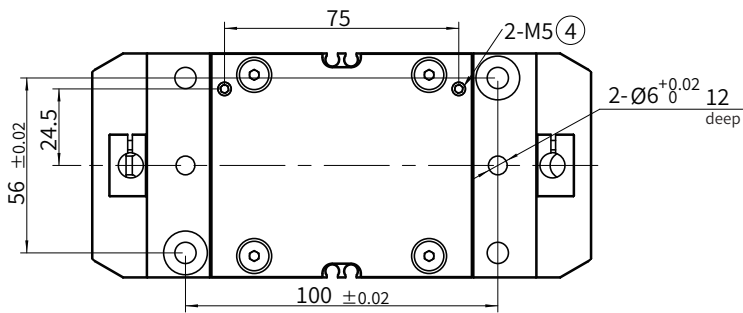


MAIN TECHNICAL PARAMETER

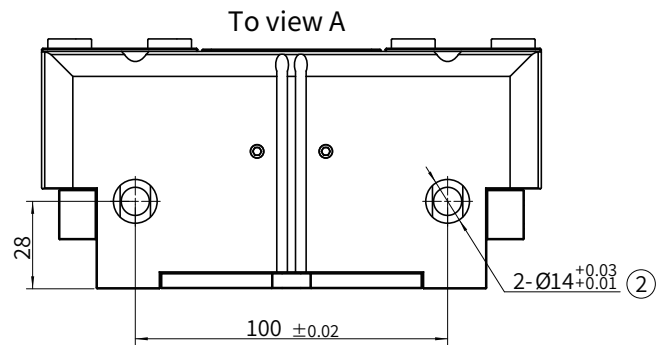
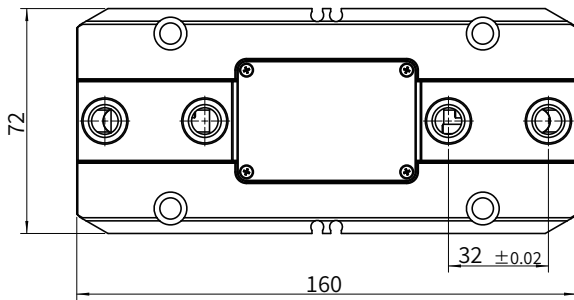
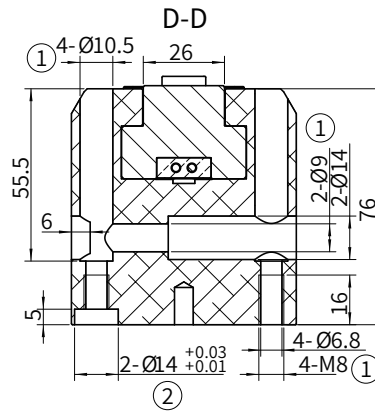
Product model	PGS-160-16
Repeated positioning accuracy (mm)	0.01
Closing force/Tension force (N)	≥1600/1750
Rated working air pressure (Mpa)	0.6
Single finger stroke (mm)	16
Working air pressure range (MPa)	0.3~0.8
Recommended clamping workpiece weight (Kg)	8

PGS-160-16

SIZE CHART



A



① Gas fingering mounting hole

③ Side air vent

⑤ Soft claw mounting positioning sleeve

② Gas fingering mounting positioning hole

④ Bottom air vent

⑥ Soft claw mounting hole