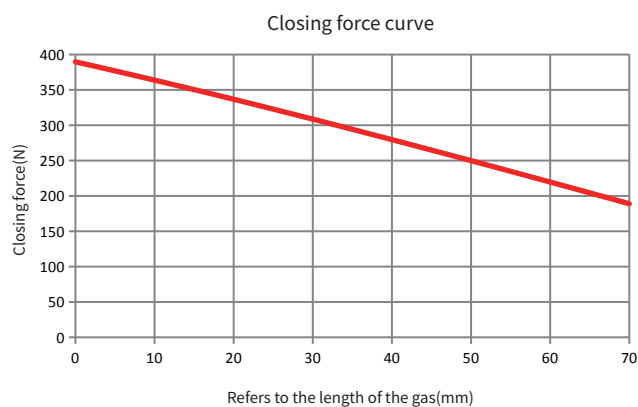
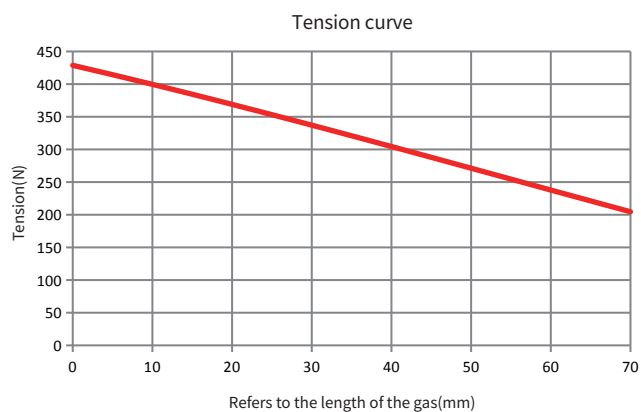


THE GRAPH

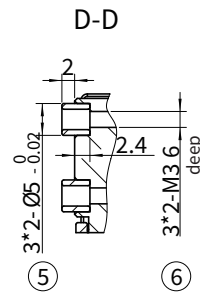
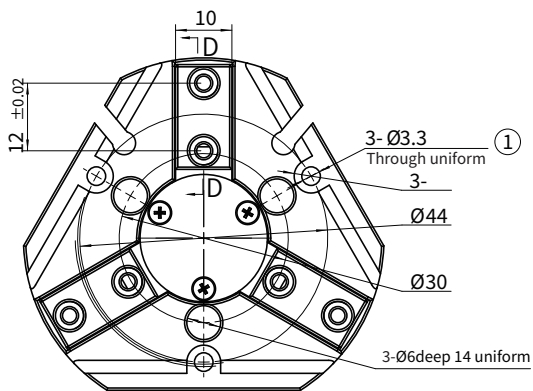
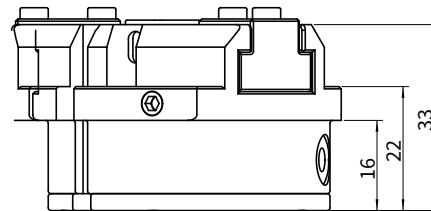
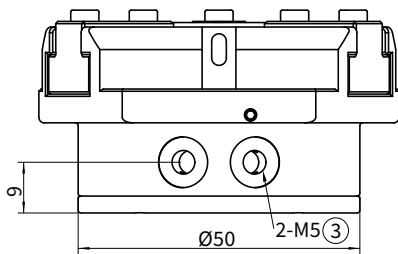
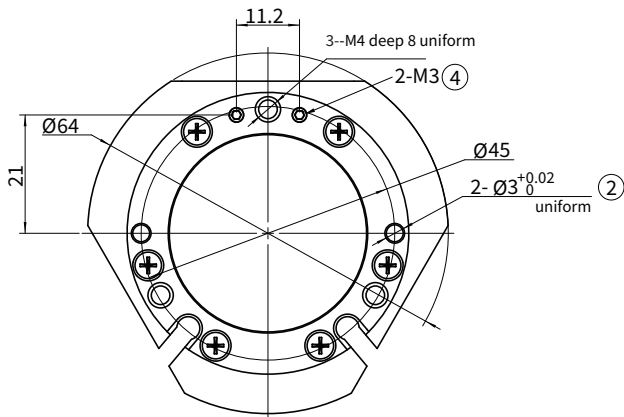


MAIN TECHNICAL PARAMETER

Product model	CGS-50-4
Repeated positioning accuracy (mm)	0.01
Closing force/ Tension force (N)	≥325/355
Rated working air pressure (Mpa)	0.6
Single finger stroke (mm)	4
Working air pressure range (MPa)	0.3~0.8
Recommended clamping workpiece weight (Kg)	1.6

CGS-50-4

SIZE CHART



① Gas fingering mounting hole

③ Side air vent

⑤ Soft claw mounting positioning sleeve

② Gas fingering mounting positioning hole

④ Bottom air vent

⑥ Soft claw mounting hole