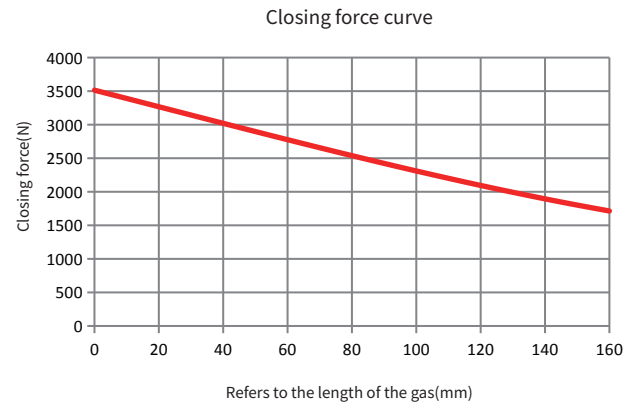
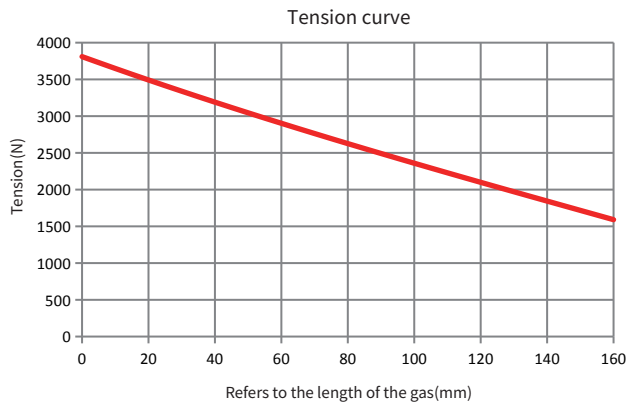


THE GRAPH

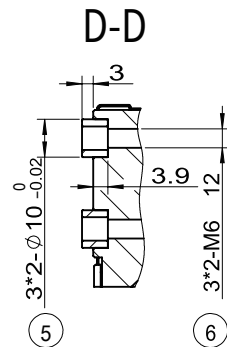
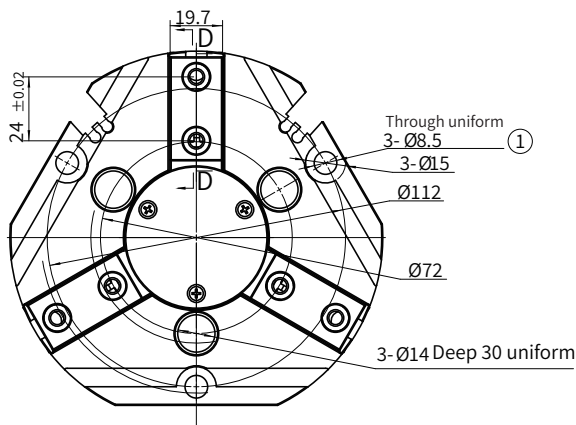
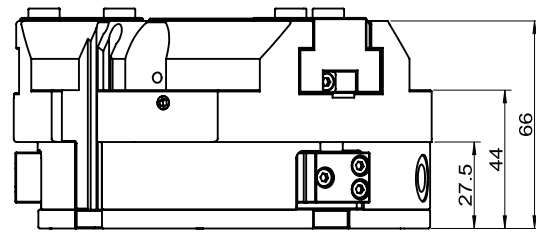
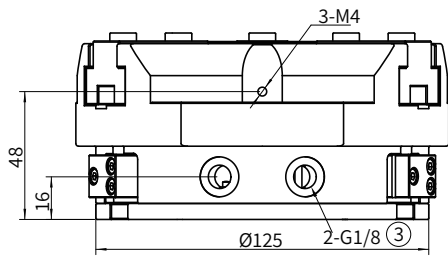
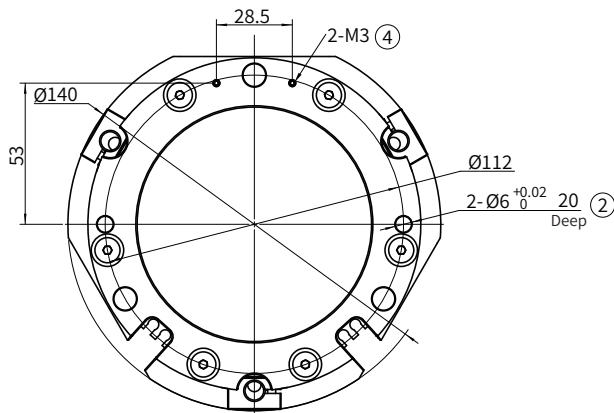


MAIN TECHNICAL PARAMETER

| Product model | CGS-125-13 |
|--|------------|
| Repeated positioning accuracy (mm) | 0.01 |
| Closing force/Tension force (N) | ≥3100/3300 |
| Rated working air pressure (Mpa) | 0.6 |
| Single finger stroke (mm) | 13 |
| Working air pressure range (MPa) | 0.3~0.8 |
| Recommended clamping workpiece weight (Kg) | 15.5 |

CGS-125-13

SIZE CHART



① Gas fingering mounting hole

③ Side air vent

⑤ Soft claw mounting positioning sleeve

② Gas fingering mounting positioning hole

④ Bottom air vent

⑥ Soft claw mounting hole