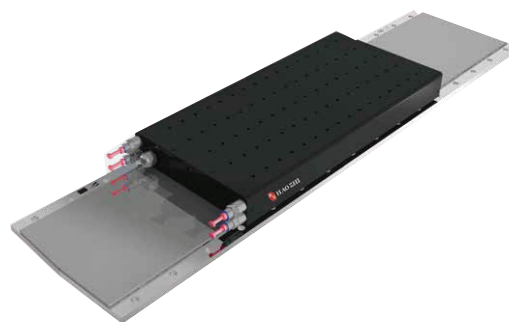


DLMF-01W

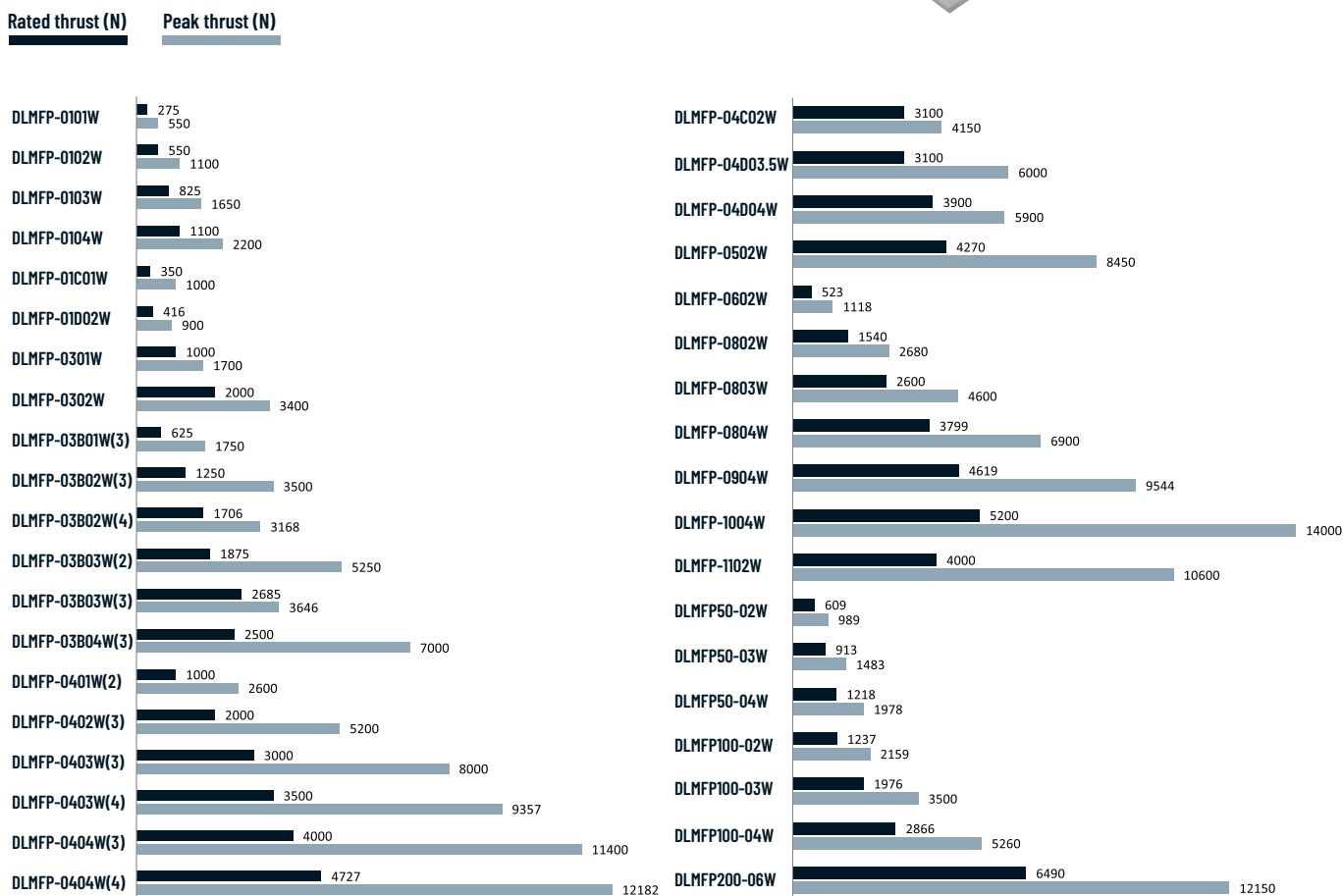
WATER-COOLED LINEAR MOTOR

Main features LS-W Series:

1. High force density
2. Low force ripple
3. High protection level
4. Fast dynamic response
5. Low temperature rise



THRUST MAP OF WATER-COOLED FLAT PANEL LINEAR MOTOR SERIES



NAMING RULE:

DLMFP-0101W

PRODUCT CATEGORY

LM: Linear Motor

MOTOR DESIGN

- F: Single side plate (iron core)
- U: Double side plate (coreless)
- M: Mavilor design
- C: Cylindrical type

COMPONENT CODE

- P: Primary (rotor)
- S: Secondary (stator)

COOLING METHOD

- W: Water
- O: Oil
- Omitted: No specific cooling

LENGTH CODE

- 01 | 02 | 03 | ...

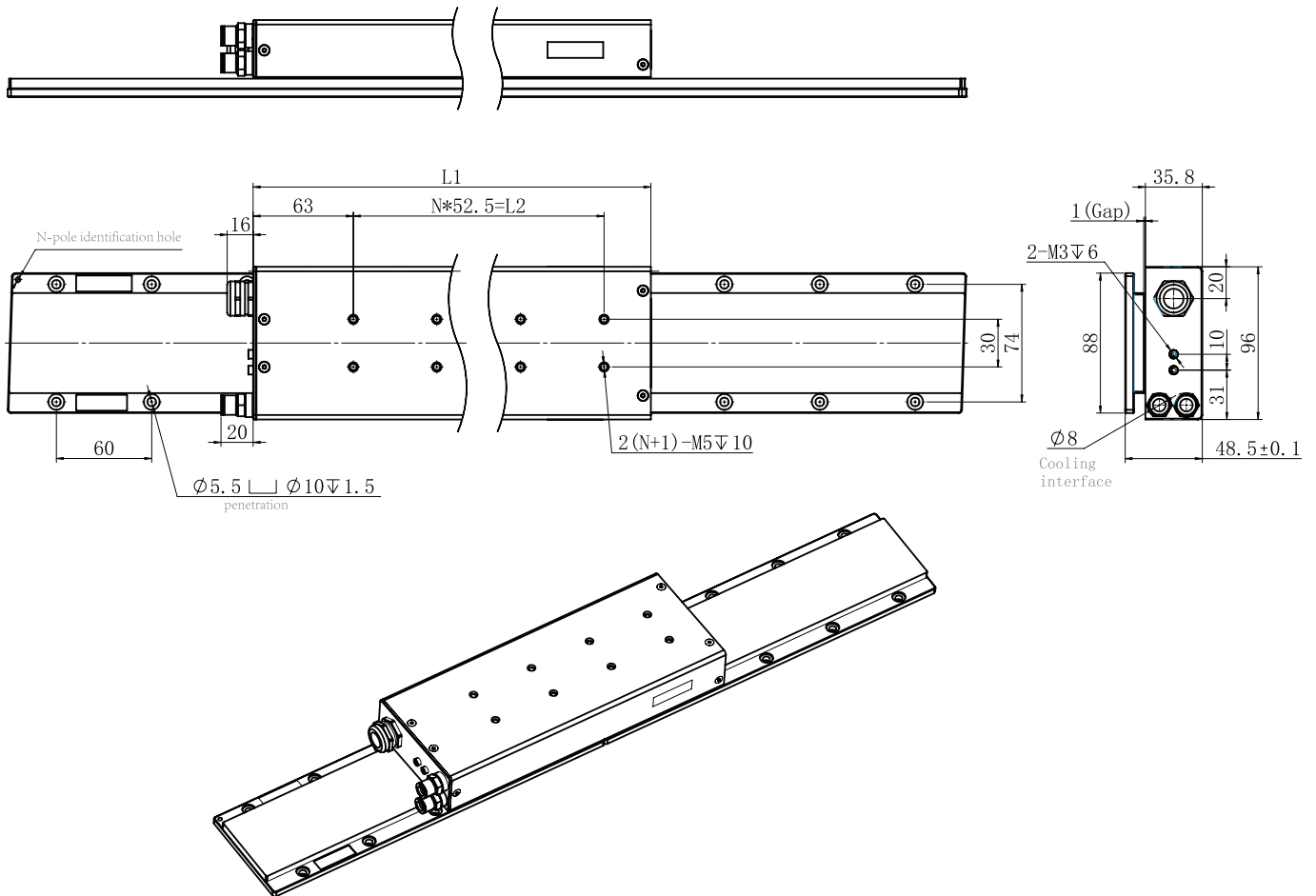
WIDTH CODE

- 01 | 02 | 03 | ...

DLMF-01W

MECHANICAL DIMENSIONS

Scope of application: PCB processing equipment, high-speed machine tools, high-precision grinding machines, spark erosion equipment, wire cutting & processing equipment, laser processing equipment, etc.



Model	DLMF-0101W	DLMF-0102W	DLMF-0103W	DLMF-0104W
L1	145	250	355	460
L2	52.5	157.5	262.5	367.5
N	1	3	5	7

Primary model	DLMFP-0101W	DLMFP-0102W	DLMFP-0103W	DLMFP-0104W
(N) Continuous thrust	275	550	825	1100
(N) Peak thrust	550	1100	1650	2200
(N/√W) Motor constant	18.5	25.6	32	36.6
(W) Peak Continuous Loss Power	221	460	664	903
(A) Continuous Current	2.8	5.6	8.4	11.2
(A) Peak Current	6.4	12.7	19.1	25.4
(N/A) thrust Constant	98.2	98.2	98.2	98.2
(Vs/m) Back EMF constant	56.7	56.7	56.7	56.7
Line resistance 20 °C (Ω)	13.6	6.6	4.4	3.3
(mH) Line inductance	70	35	23.3	17.5
(°C) Peakttemperature	130	130	130	130
(mm) Pole width (N-N)	30	30	30	30
(L/min) Minimum flow rate	3.7	3.7	3.7	3.7
(N) Attraction thrust	1185	2370	3555	4740
(Kg) Mass of primary	2.2	4.1	5.9	7.8
(M) Standard cable length	1	1	1	1

Black resin

Secondary model	DLMFS-0101	DLMFS-0103	DLMFS-0107
(mm) Specifications	120	180	300

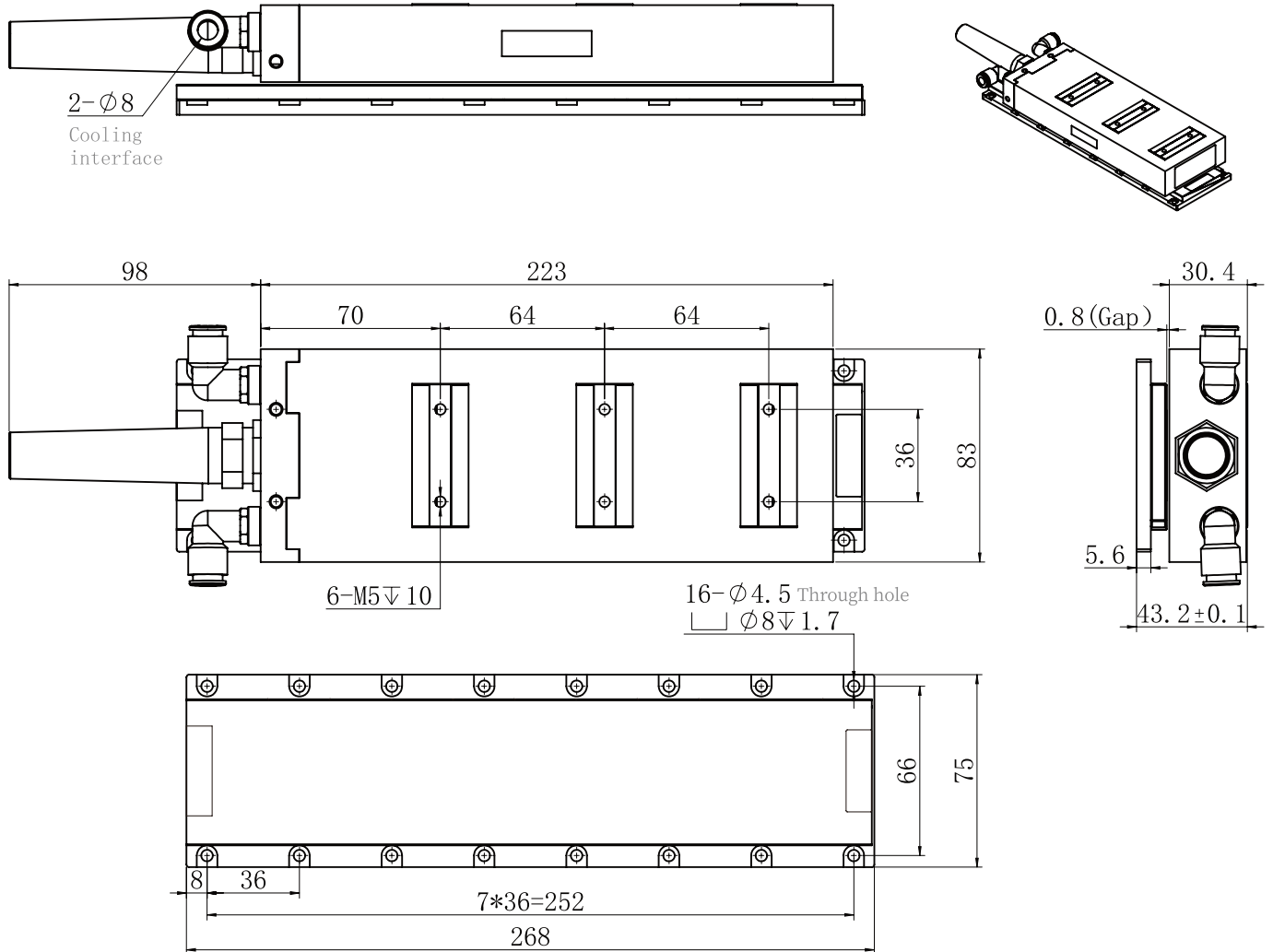
Stainless steel sheet metal

Secondary model	DLMFS-0101-S	DLMFS-0103-S	DLMFS-0107-S
(mm) Specifications	120	180	300

DLMF-01C01W

MECHANICAL DIMENSIONS

Scope of application: PCB processing equipment, laser processing equipment, CNC machine tool, etc...



DLMF-01C01W

IRONCORE LINEAR MOTOR SPECIFICATIONS

Primary model	DLMF-01C01W
(N) Continuous thrust	350
(N) Peak thrust	1000
(N/√W) Motor constant	25.5
(W) Peak Continuous Loss Power	188
(A) Continuous Current	5
(A) Peak Current	15
(N/A) thrust Constant	70
(Vs/m) Back EMF constant	40.4
Line resistance 20 °C (Ω)	3.9
(mH) Line inductance	24
(°C) Peakttemperature	130
(mm) Pole width (N-N)	48
(L/min) Minimum flow rate	4
(N) Attraction thrust	2200
(Kg) Mass of primary	2.8
(M) Standard cable length	0.8

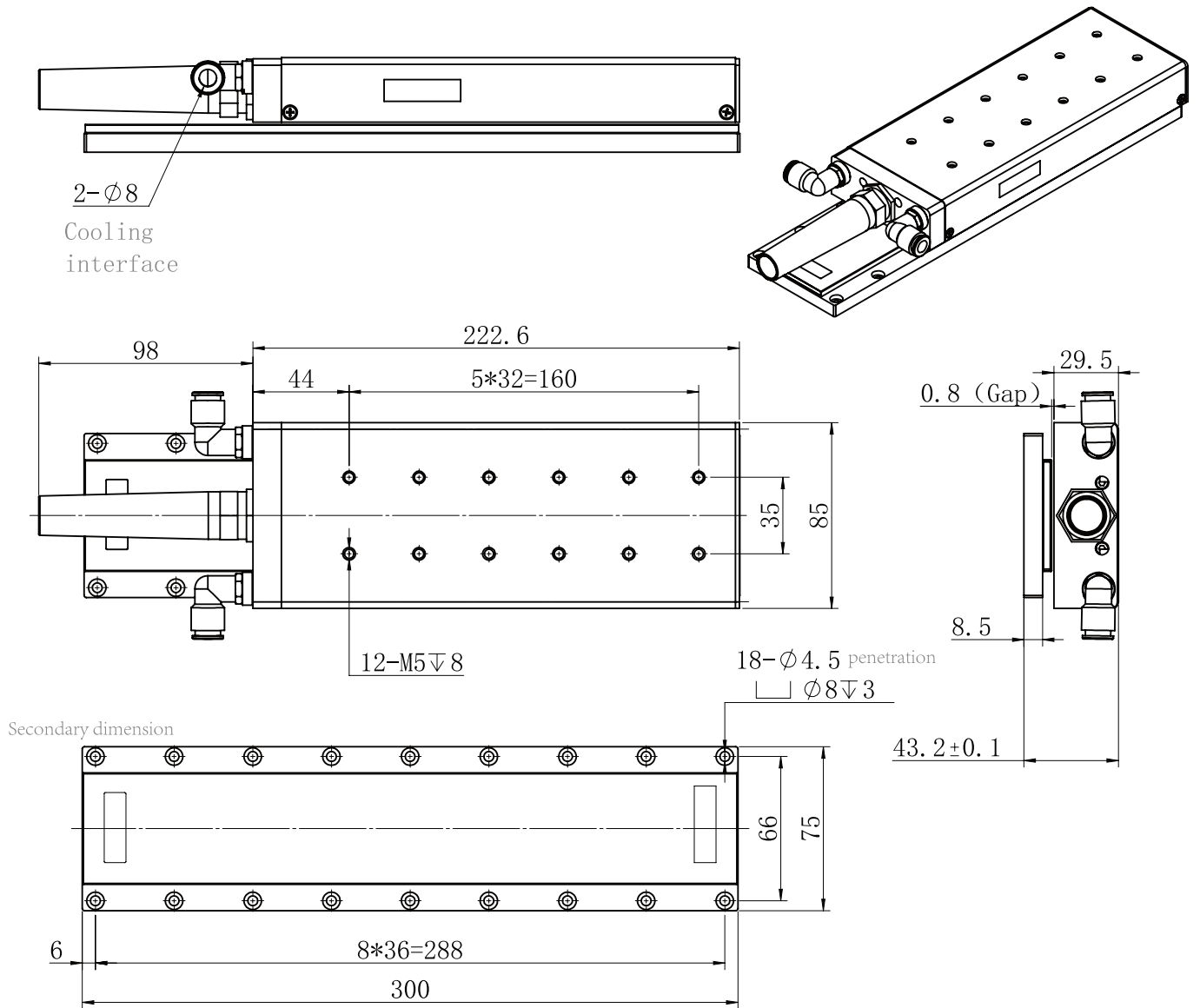
Stainless steel sheet metal

Secondary model	DLMFS-01CS01
(mm) Specifications	288

DLMF-01D02W

MECHANICAL DIMENSIONS

Scope of application: PCB processing equipment, laser processing equipment, CNC machine tool, etc.



DLMF-01D02W

IRONCORE LINEAR MOTOR SPECIFICATIONS

Primary model	DLMF-01D02W
(N) Continuous thrust	416
(N) Peak thrust	900
(N/√W) Motor constant	26.4
(W) Peak Continuous Loss Power	248
(A) Continuous Current	5.2
(A) Peak Current	15
(N/A) thrust Constant	80
(Vs/m) Back EMF constant	46.2
Line resistance 20 °C (Ω)	5.9
(mH) Line inductance	28
(°C) Peakttemperature	130
(mm) Pole width (N-N)	24
(L/min) Minimum flow rate	3
(N) Attraction thrust	2200
(Kg) Mass of primary	2.9
(M) Standard cable length	0.8

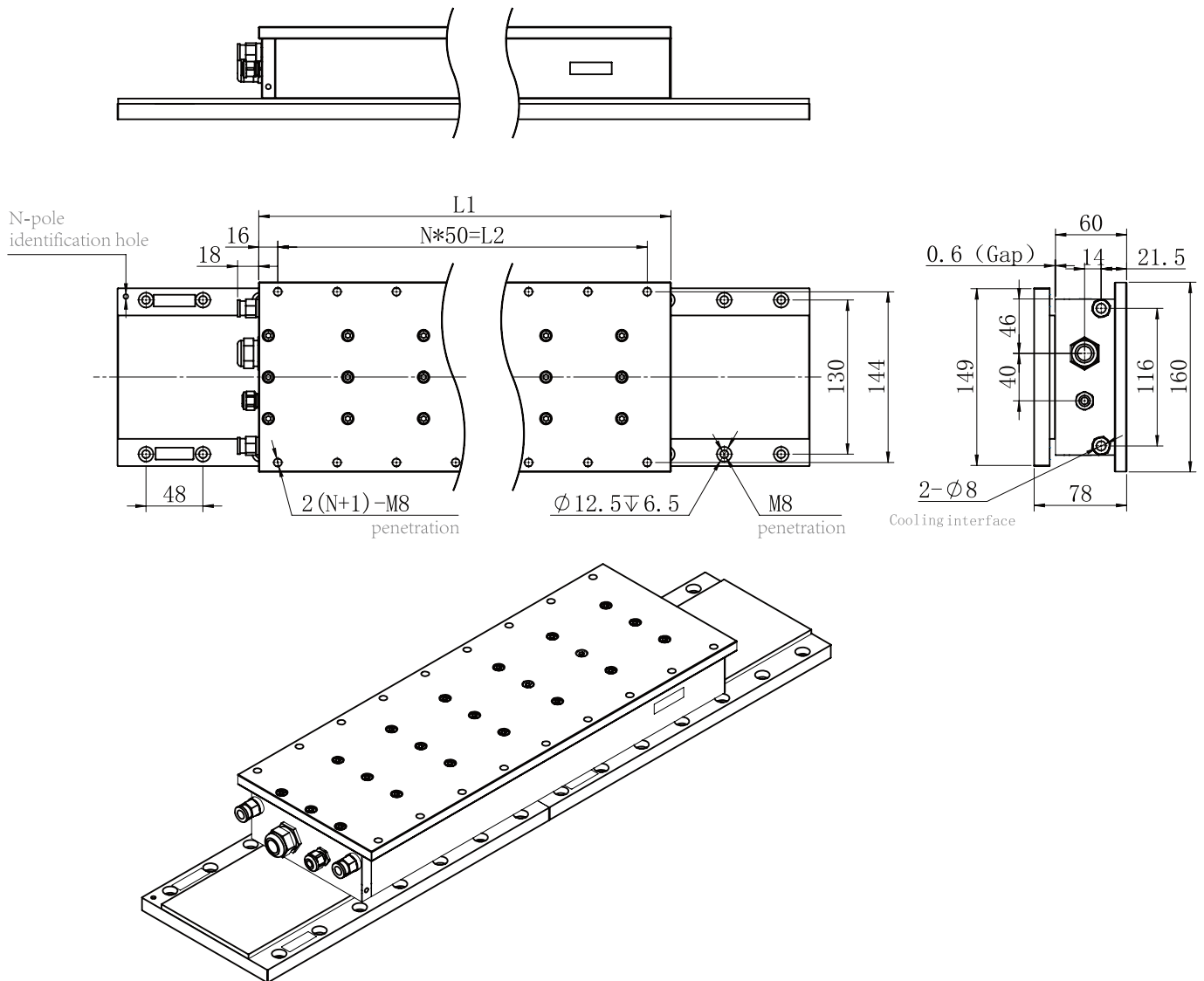
Stainless steel sheet metal

Secondary model	DLMFS-01D02-S
(mm) Specifications	304

DLMF-03W

MECHANICAL DIMENSIONS

Scope of application: High-speed machine tools, high-precision grinding machines, spark erosion equipment, wire cutting & processing equipment, laser processing equipment, etc.



Model	DLMF-0301W	DLMF-0302W
L1	247	436
L2	200	400
N	4	8

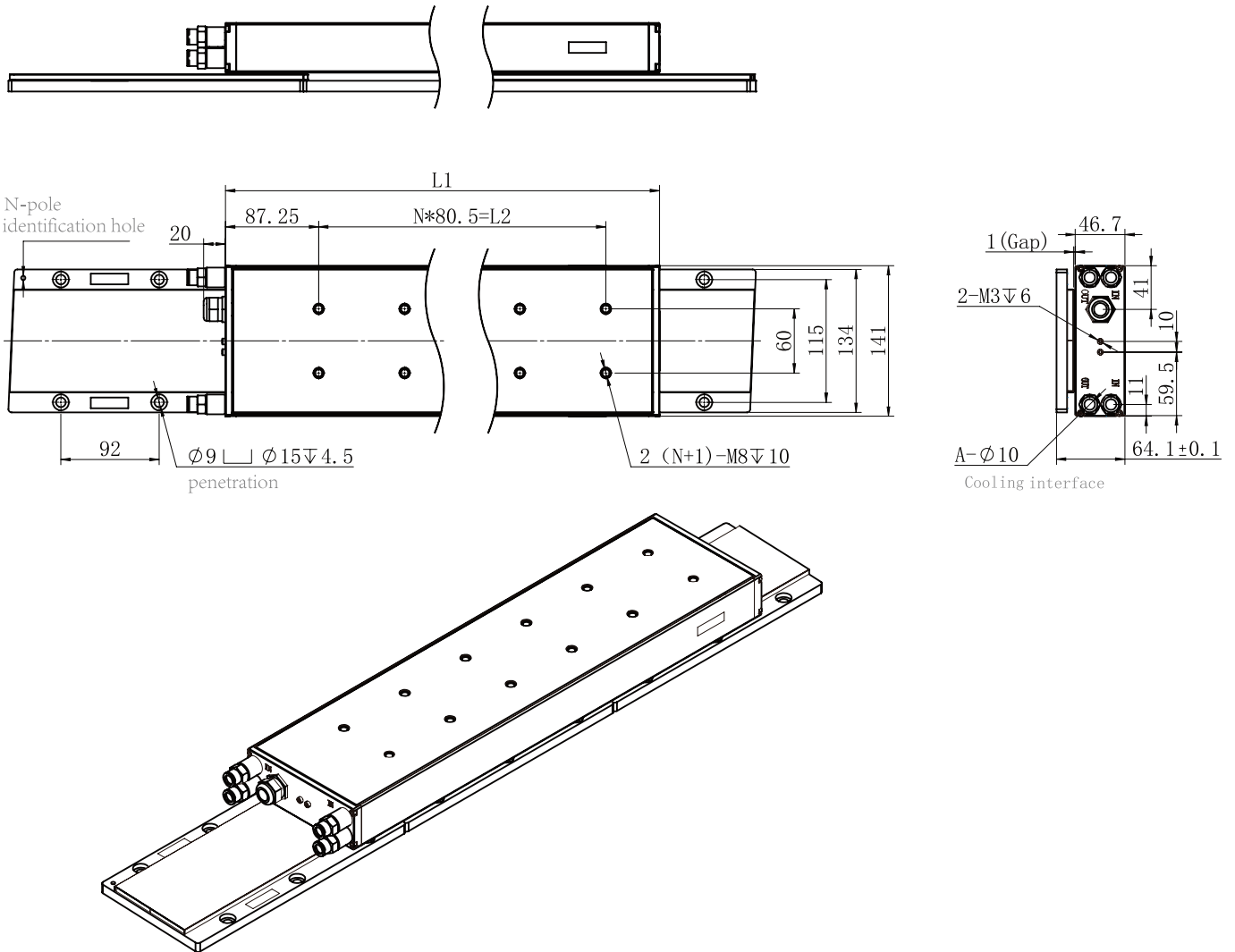
Primary model	DLMFP-0301W	DLMFP-0302W
(N) Continuous thrust	1000	2000
(N) Peak thrust	1700	3400
(N/√W) Motor constant	41.3	58.4
(W) Peak Continuous Loss Power	586	1171
(A) Continuous Current	15	30
(A) Peak Current	30	51.7
(N/A) thrust Constant	66.7	66.7
(Vs/m) Back EMF constant	38.5	38.5
Line resistance 20 °C (Ω)	1.3	0.65
(mH) Line inductance	21	10.5
(°C) Peakttemperature	130	130
(mm) Pole width (N-N)	48	48
(L/min) Minimum flow rate	3	3
(N) Attraction thrust	3400	6800
(Kg) Mass of primary	13	26
(M) Standard cable length	5	7

Black resin				
Secondary model	DLMFS-0301	DLMFS-0302	DLMFS-0303	DLMFS-0304
(mm) Specifications	192	240	288	336

DLMF-03BW

MECHANICAL DIMENSIONS

Scope of application: High-speed machine tools, high-precision grinding machines, spark erosion equipment, wire cutting & processing equipment, laser processing equipment, etc.



Model	DLMFP-03B01W(3)	DLMFP-03B02W(3)	DLMFP-03B02W(4)	DLMFP-03B03W(2)	DLMFP-03B03W(3)	DLMFP-03B04W(3)
L1	218	379	379	540	540	701
L2	80.5	241.5	241.5	402.5	402.5	563.5
N	1	3	3	5	5	7
A	2	2	2	4	4	4

Primary model	DLMFP-03B01W(3)	DLMFP-03B02W(3)	DLMFP-03B02W(4)	DLMFP-03B03W(2)	DLMFP-03B03W(3)	DLMFP-03B04W(3)
(N) Continuous thrust	625	1250	1706	1875	2685	2500
(N) Peak thrust	1750	3500	3168	5250	3646	7000
(N/√W) Motor constant	32.4	46.2	49	56.5	61.7	65.4
(W) Peak Continuous Loss Power	371	731	1212	1103	1892	1463
(A) Continuous Current	6.3	12.5	12.5	18.8	21.5	25
(A) Peak Current	19	37.5	25	56.3	30	75
(N/A) thrust Constant	100	100	136.5	100	124.9	100
(Vs/m) Back EMF constant	60	60	80.4	60	72	60
Line resistance 20 °C (Ω)	4.8	2.4	4.7	1.6	2.1	1.2
(mH) Line inductance	48	24	46.8	16	25.6	12
(°C) Peakttemperature	130	130	130	130	130	130
(mm) Pole width (N-N)	46	46	46	46	46	46
(L/min) Minimum flow rate	6	6	8	6	8	6
(N) Attraction thrust	3000	6000	6000	9000	9000	12000
(Kg) Mass of primary	6.3	12.5	12.5	18.8	18.8	25
(M) Standard cable length	1.5	1.5	5	1.5	5	1.5

Black resin

Secondary model	DLMFS-03B01(2)	DLMFS-03B03(2)	DLMFS-03B07(2)
(mm) Specifications	184	276	460

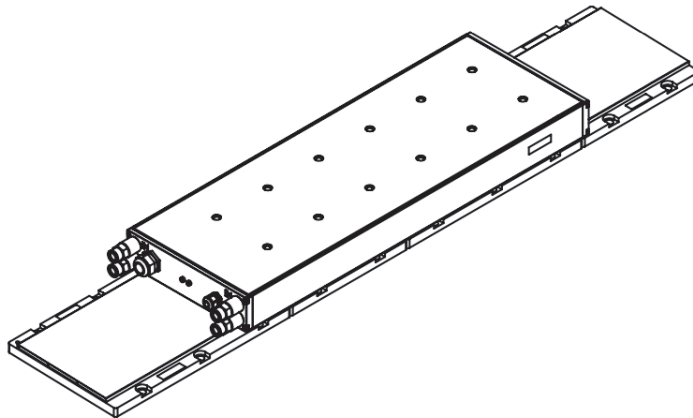
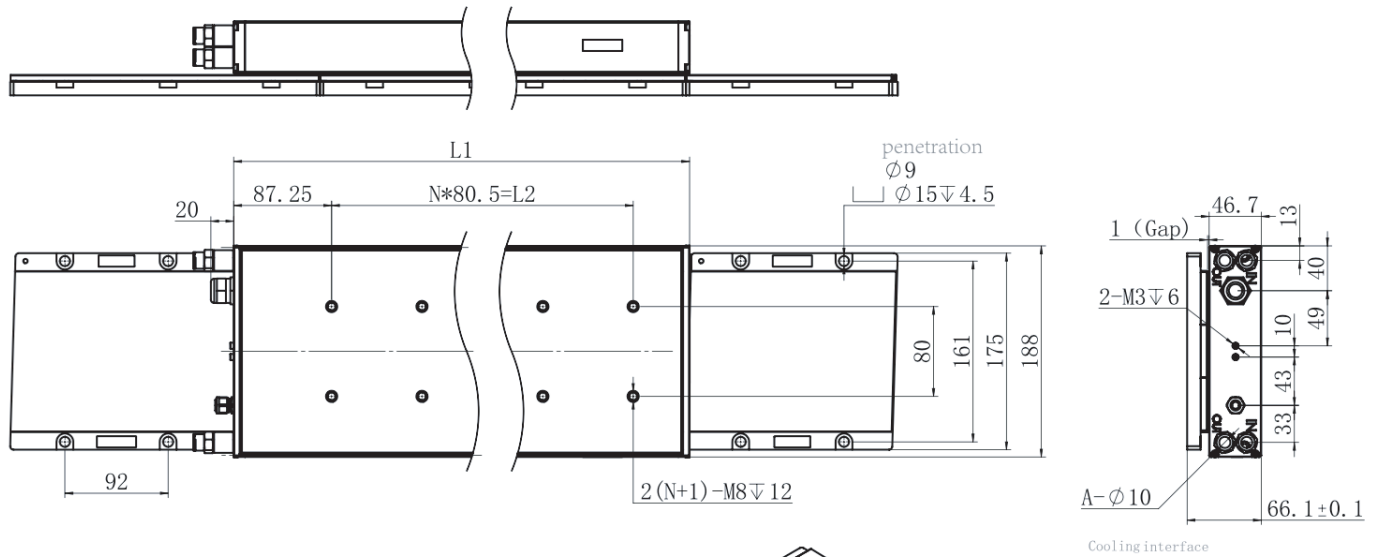
Stainless steel sheet metal

Secondary model	DLMFS-03B01-S	DLMFS-03B03-S	DLMFS-03B07-S
(mm) Specifications	184	276	460

DLMF-04BW

MECHANICAL DIMENSIONS

Scope of application: High-speed machine tools, high-precision grinding machines, spark erosion equipment, wire cutting & processing equipment, laser processing equipment, etc.



Model	DLMFP-04B01W(2)	DLMFP-04B02W(3)	DLMFP-04B02W(3)	DLMFP-04B03W(4)	DLMFP-04B03W(3)	DLMFP-04B04W(4)
L1	218	379	540	540	701	701
L2	80.5	241.5	402.5	402.5	563.5	563.5
N	1	3	5	5	7	7
A	2	2	4	4	4	4

Primary model	DLMFP-04B01W(2)	DLMFP-04B02W(3)	DLMFP-04B02W(3)	DLMFP-04B03W(4)	DLMFP-04B03W(3)	DLMFP-04B04W(4)
(N) Continuous thrust	1000	2000	3000	3500	4000	4727
(N) Peak thrust	2600	5200	8000	9357	11400	12182
(N/√W) Motor constant	50.4	71.3	86.8	90.6	100.4	102.7
(W) Peak Continuous Loss Power	394	787	1194	1492	1588	2117
(A) Continuous Current	6.5	13	19.5	19.5	26	26
(A) Peak Current	19.5	39	58.5	58.5	78	75
(N/A) thrust Constant	153.8	153.8	153.8	179.5	153.8	179.5
(Vs/m) Back EMF constant	88.8	88.8	88.8	103.5	88.8	103.5
Line resistance 20 °C (Ω)	6.6	3.3	2.2	2.75	1.65	2.2
(mH) Line inductance	66	33	22	27.5	16.5	25.4
(°C) Peakttemperature	130	130	130	130	130	130
(mm) Pole width (N-N)	46	46	46	46	46	46
(L/min) Minimum flow rate	6	6	6	8	6	8
(N) Attraction thrust	4650	9300	13950	13950	18600	18600
(Kg) Mass of primary	9.2	17.3	25.5	25.5	33.7	33.7
(M) Standard cable length	1.5	1.5	1.5	1.5	1.5	1.5

Black resin

Secondary model	DLMFS-04A01	DLMFS-04A03
(mm) Specifications	184	276

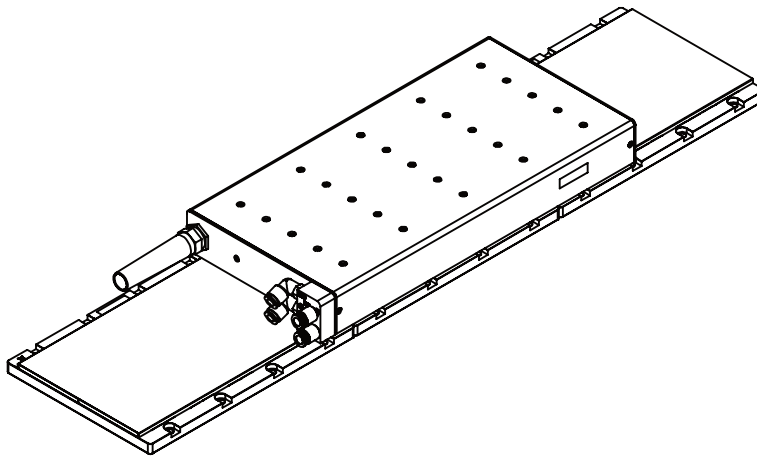
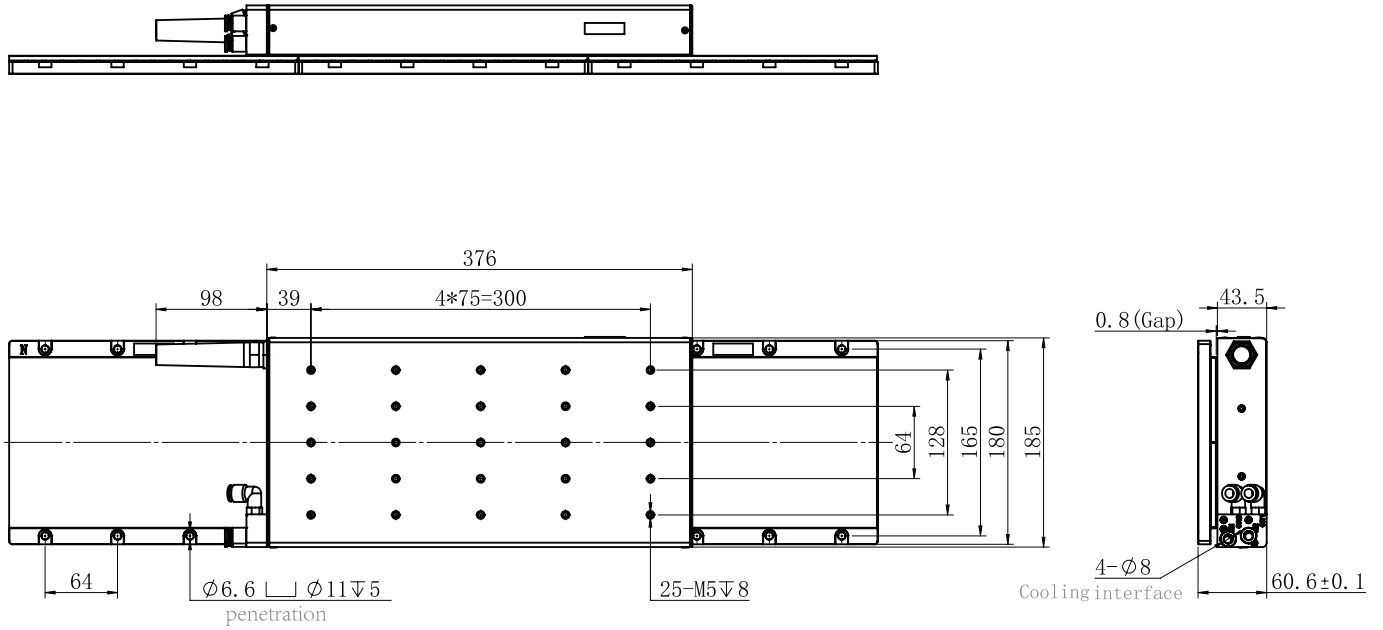
Stainless steel sheet metal

Secondary model	DLMFS-04A01-S	DLMFS-04A03-S
(mm) Specifications	184	276

DLMF-04C02W

MECHANICAL DIMENSIONS

Scope of application: PCB processing equipment, laser processing equipment, CNC machine tool, etc.



DLMF-04C02W

IRONCORE LINEAR MOTOR SPECIFICATIONS

Primary model	DLMFP-04C02W
(N) Continuous thrust	3100
(N) Peak thrust	4150
(N/√W) Motor constant	79.3
(W) Peak Continuous Loss Power	1527
(A) Continuous Current	20
(A) Peak Current	30
(N/A) thrust Constant	155
(Vs/m) Back EMF constant	89.5
Line resistance 20 °C (Ω)	2.7
(mH) Line inductance	27
(°C) Peakttemperature	130
(mm) Pole width (N-N)	32
(L/min) Minimum flow rate	4
(N) Attraction thrust	14500
(Kg) Mass of primary	17.5
(M) Standard cable length	6

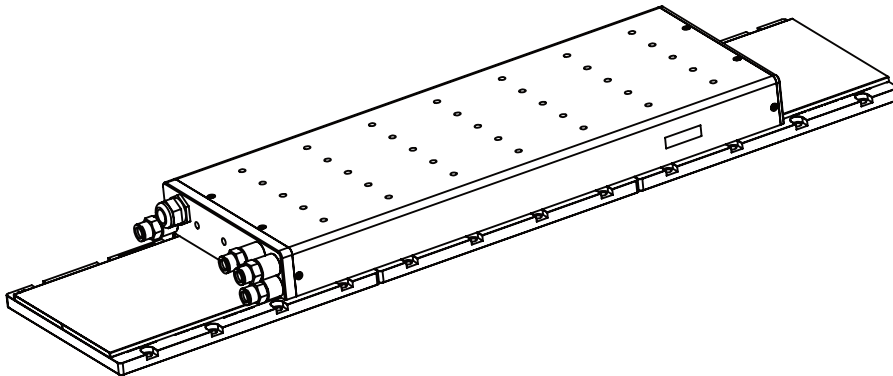
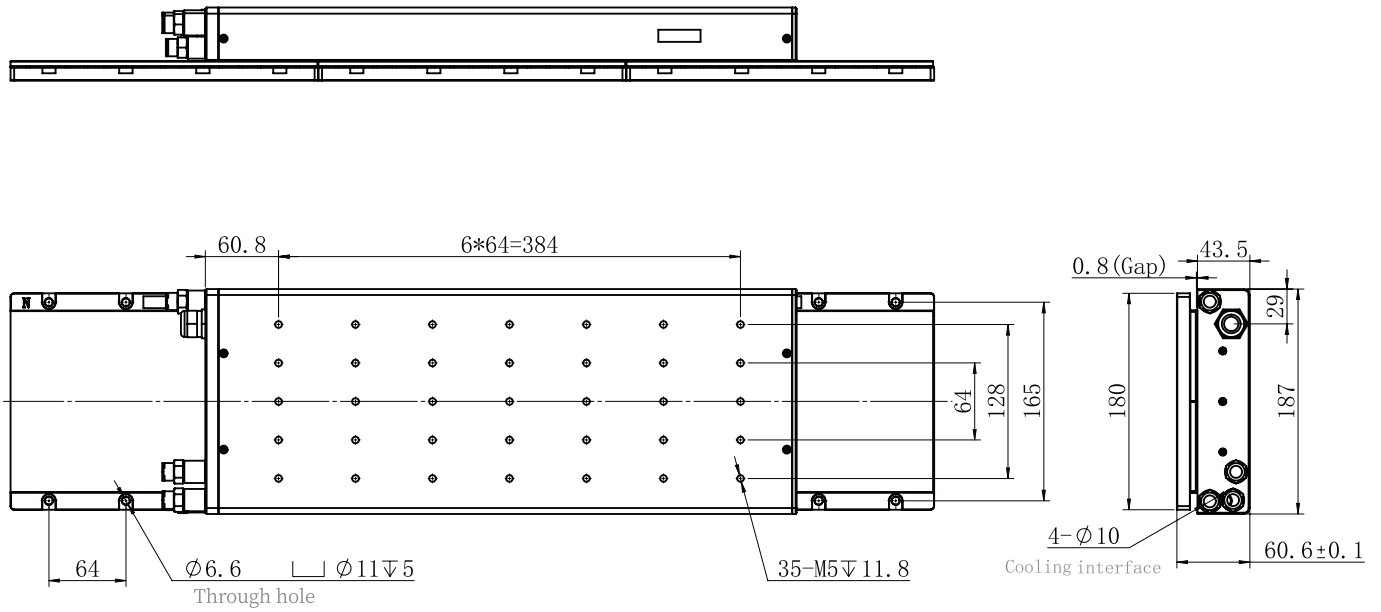
Stainless steel sheet metal

Secondary model	DLMFS-04CS-064	DLMFS-04CS-128	DLMFS-04CS-256	DLMFS-04CS-512
(mm) Specifications	64	128	256	512

DLMF-04C03.5W

MECHANICAL DIMENSIONS

Scope of application: PCB processing equipment, laser processing equipment, CNC machine tool, etc.



DLMF-04C03.5W

IRONCORE LINEAR MOTOR SPECIFICATIONS

Primary model	DLMFP-04C03.5W
(N) Continuous thrust	3100
(N) Peak thrust	6000
(N/√W) Motor constant	71.3
(W) Peak Continuous Loss Power	1894
(A) Continuous Current	19.8
(A) Peak Current	45.5
(N/A) thrust Constant	155
(Vs/m) Back EMF constant	89.5
Line resistance 20 °C (Ω)	2.5
(mH) Line inductance	18.7
(°C) Peakttemperature	130
(mm) Pole width (N-N)	32
(L/min) Minimum flow rate	8
(N) Attraction thrust	9600
(Kg) Mass of primary	22.5
(M) Standard cable length	7

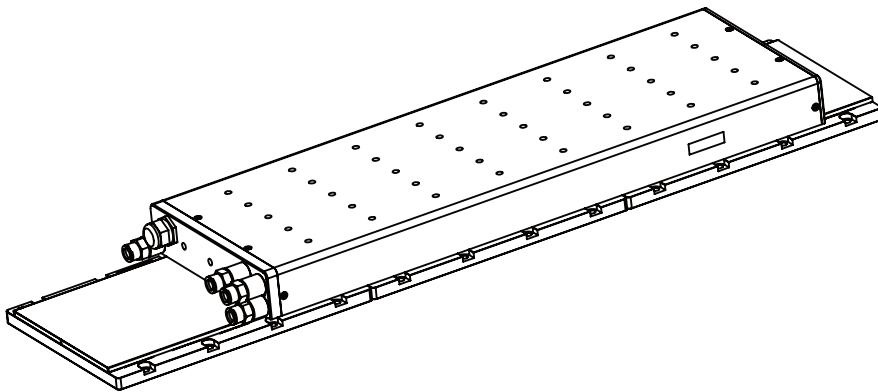
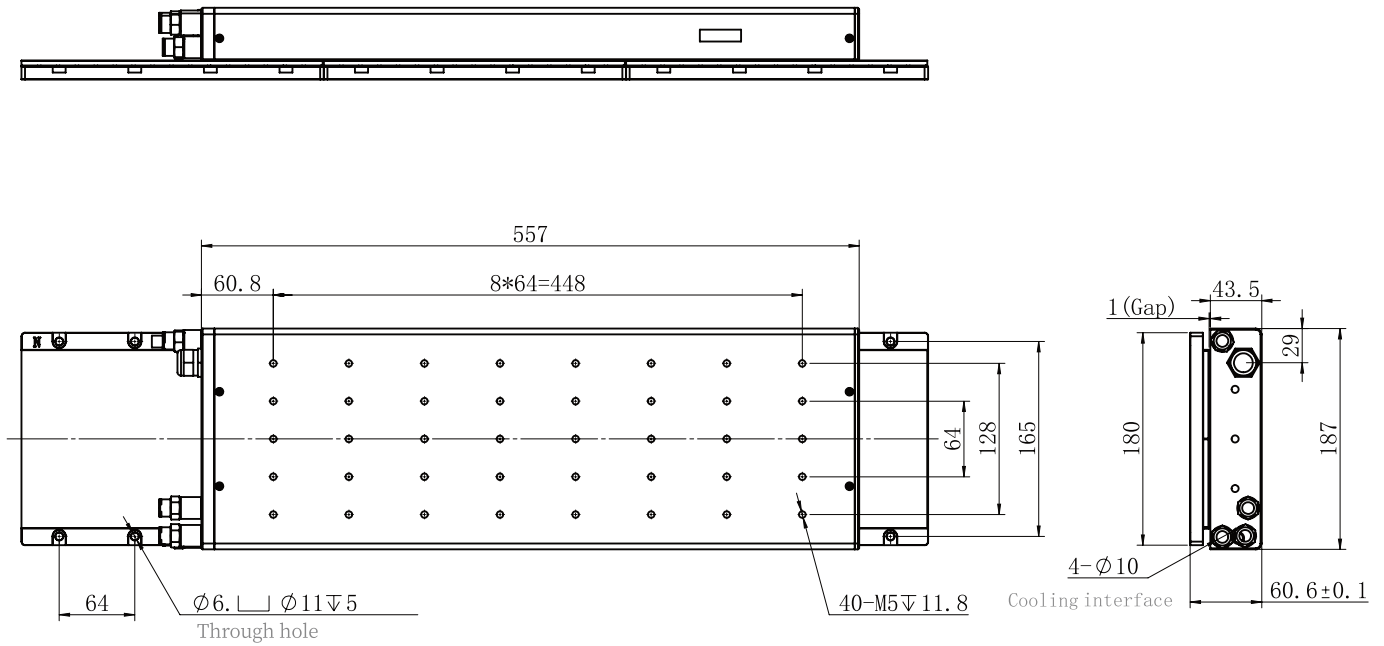
Stainless steel sheet metal

Secondary model	DLMFS-04CS-064	DLMFS-04CS-128	DLMFS-04CS-256	DLMFS-04CS-512
(mm) Specifications	64	128	256	512

DLMF-04C04W

MECHANICAL DIMENSIONS

Scope of application: PCB processing equipment, laser processing equipment, CNC machine tool, etc.



DLMF-04C04W

IRONCORE LINEAR MOTOR SPECIFICATIONS

Primary model	DLMFP-04C04W
(N) Continuous thrust	3900
(N) Peak thrust	5900
(N/√W) Motor constant	93
(W) Peak Continuous Loss Power	1739
(A) Continuous Current	30
(A) Peak Current	50
(N/A) thrust Constant	117.9
(Vs/m) Back EMF constant	95.9
Line resistance 20 °C (Ω)	1
(mH) Line inductance	9.8
(°C) Peakttemperature	130
(mm) Pole width (N-N)	32
(L/min) Minimum flow rate	8
(N) Attraction thrust	10900
(Kg) Mass of primary	25
(M) Standard cable length	5

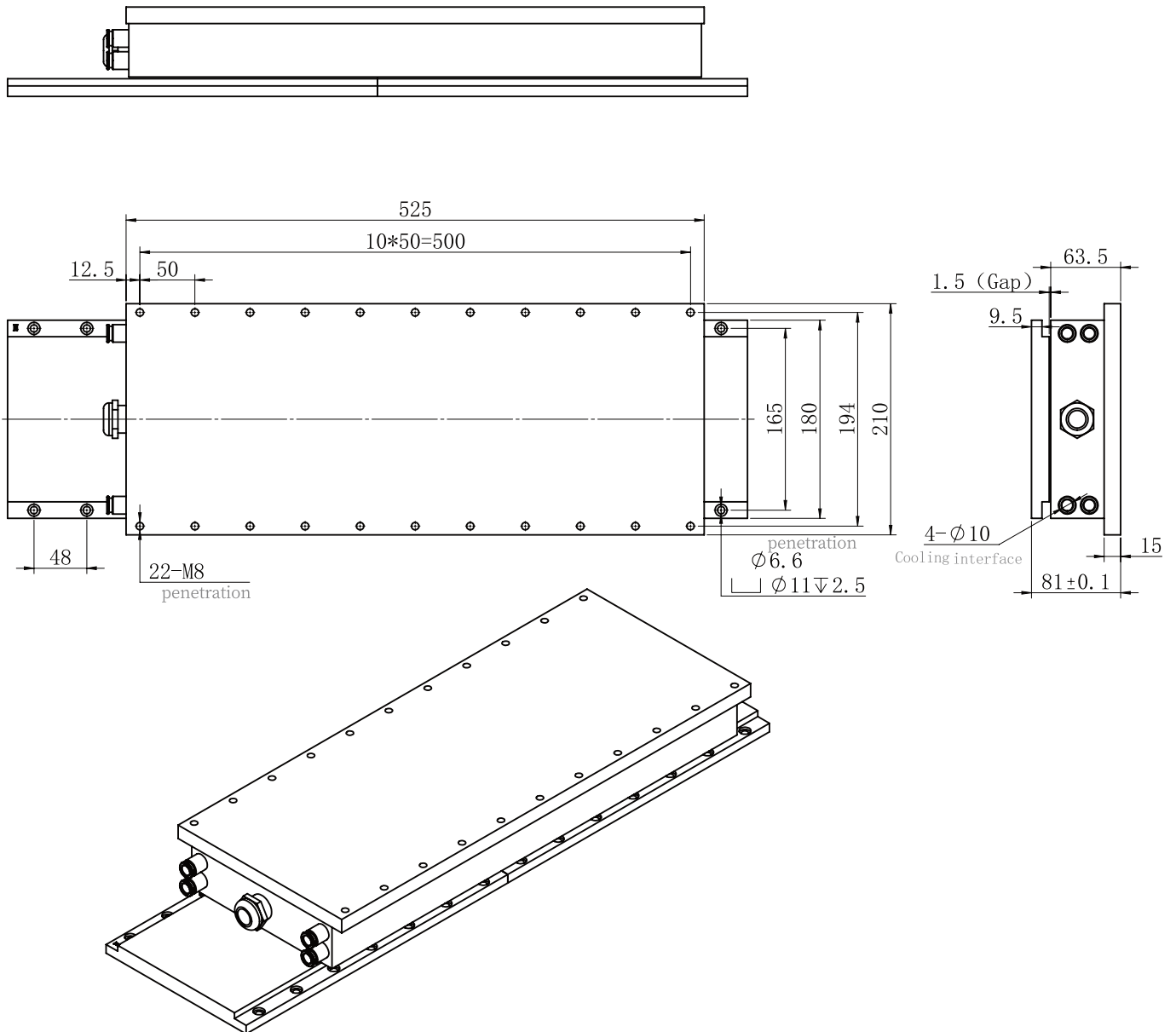
Stainless steel sheet metal

Secondary model	DLMFS-04CS-064	DLMFS-04CS-128	DLMFS-04CS-256	DLMFS-04CS-512
(mm) Specifications	64	128	256	512

DLMF-0502W

MECHANICAL DIMENSIONS

Scope of application: PCB processing equipment, high-speed machine tools, high-precision grinding machines, spark erosion equipment, wire cutting & processing equipment, laser processing equipment, etc.



DLMF-0502W

IRONCORE LINEAR MOTOR SPECIFICATIONS

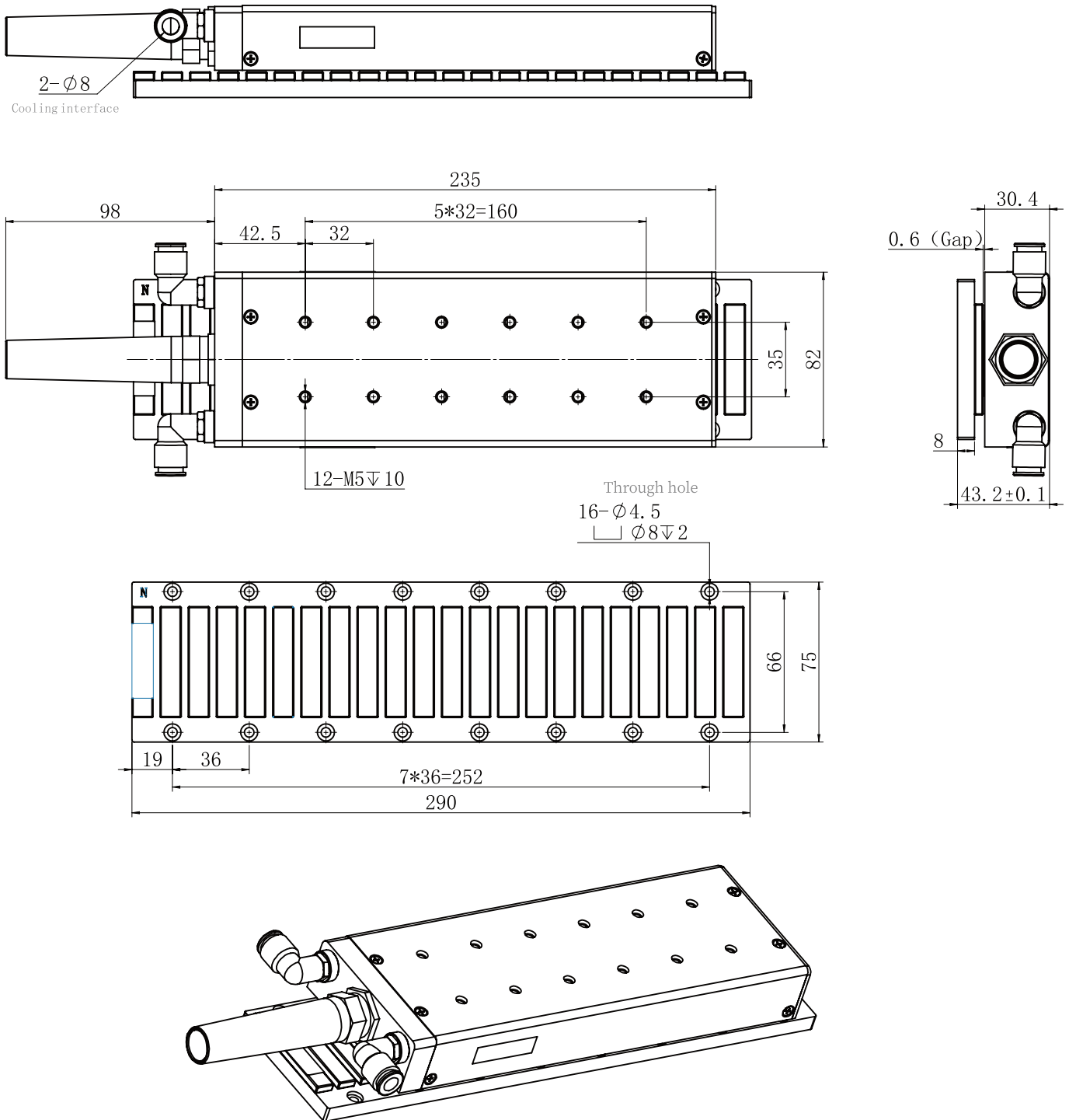
Primary model	DLMFP-0502W
(N) Continuous thrust	4270
(N) Peak thrust	8450
(N/√W) Motor constant	88
(W) Peak Continuous Loss Power	2352
(A) Continuous Current	28
(A) Peak Current	60
(N/A) thrust Constant	152.5
(Vs/m) Back EMF constant	104.6
Line resistance 20 °C (Ω)	2
(mH) Line inductance	22.4
(°C) Peakttemperature	130
(mm) Pole width (N-N)	48
(L/min) Minimum flow rate	8
(N) Attraction thrust	13764
(Kg) Mass of primary	35
(M) Standard cable length	5

Stainless steel sheet metal				
Secondary model	DLMFS-0501	DLMFS-0502	DLMFS-0503	DLMFS-0504
(mm) Specifications	192	240	288	336

DLMF-0602W

MECHANICAL DIMENSIONS

Scope of application: PCB processing equipment, laser processing equipment, CNC machine tool, etc.



DLMF-0602W

IRONCORE LINEAR MOTOR SPECIFICATIONS

Primary model	DLMFP-0602W
(N) Continuous thrust	523
(N) Peak thrust	1118
(N/√W) Motor constant	31
(W) Peak Continuous Loss Power	282
(A) Continuous Current	4.3
(A) Peak Current	10.2
(N/A) thrust Constant	121.3
(Vs/m) Back EMF constant	59.7
Line resistance 20 °C (Ω)	10.8
(mH) Line inductance	38.4
(°C) Peakttemperature	130
(mm) Pole width (N-N)	26.4
(L/min) Minimum flow rate	4
(N) Attraction thrust	2420
(Kg) Mass of primary	3
(M) Standard cable length	0.8

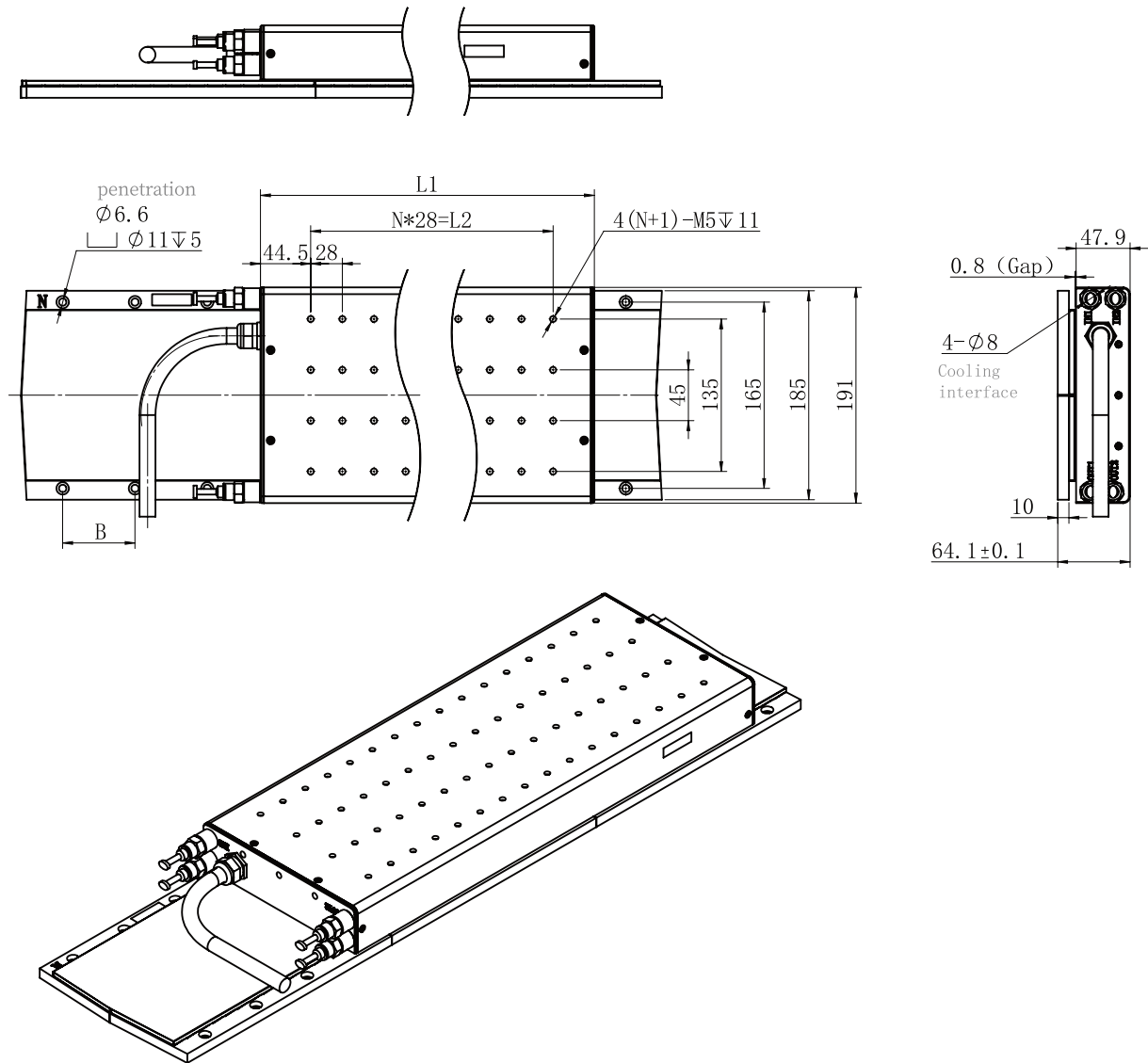
Stainless steel sheet metal

Secondary model	DLMFS-06N-290
(mm) Specifications	290

DLMF-08W

MECHANICAL DIMENSIONS

Scope of application: PCB processing equipment, laser processing equipment, CNC machine tool, etc.



Model	DLMFP-0802W	DLMFP-0803W	DLMFP-0804W
L1	277	389	501
L2	196	308	420
N	7	11	15

DLMF-08W

IRONCORE LINEAR MOTOR SPECIFICATIONS

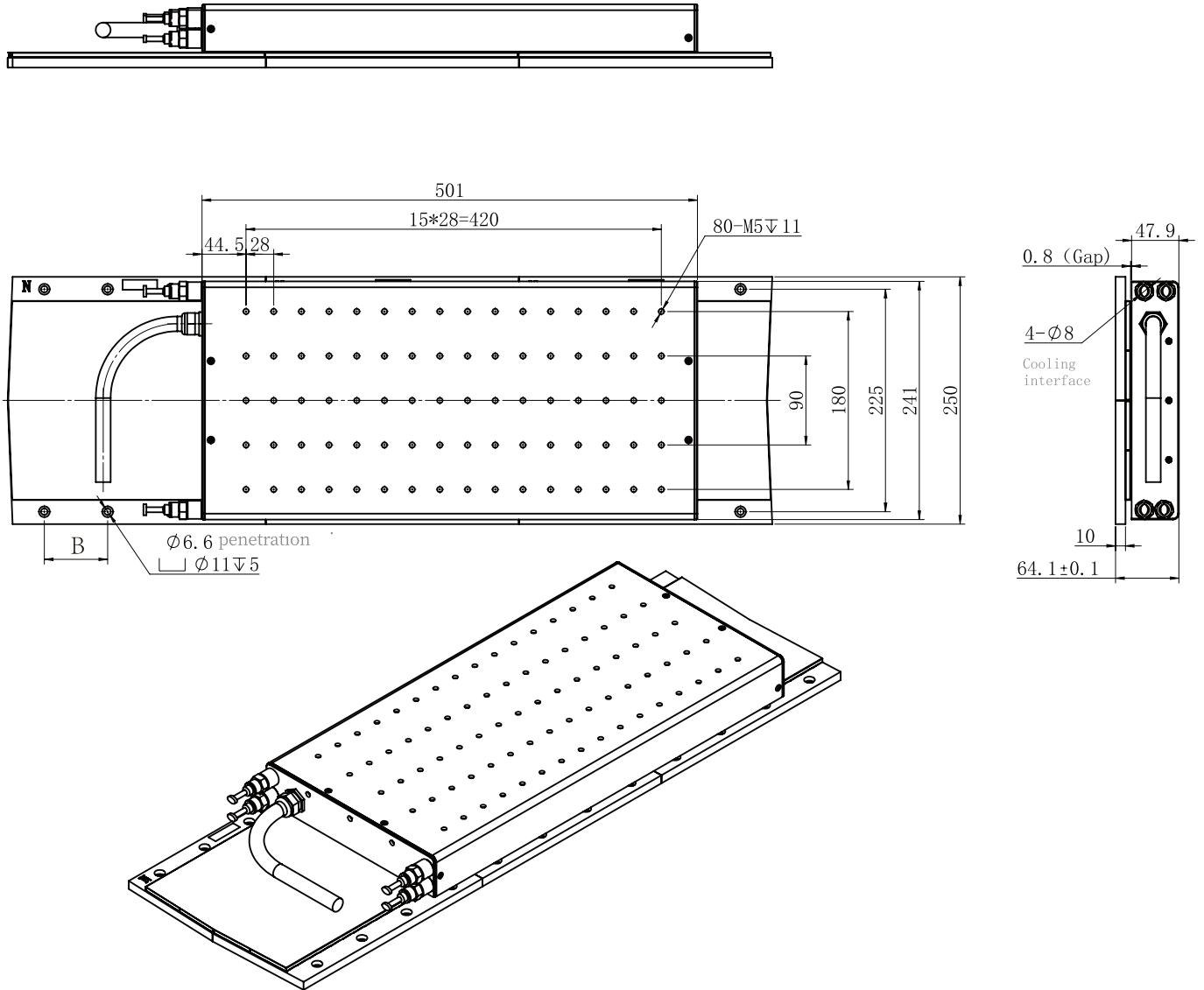
Primary model	DLMFP-0802W	DLMFP-0803W	DLMFP-0804W
(N) Continuous thrust	1540	2600	3799
(N) Peak thrust	2680	4600	6900
(N/√W) Motor constant	69	85	98.6
(W) Peak Continuous Loss Power	494	939	1483
(A) Continuous Current	7.5	12	17.5
(A) Peak Current	14	24	36
(N/A) thrust Constant	217	217	217
(Vs/m) Back EMF constant	129	129	129
Line resistance 20 °C (Ω)	5.8	4.3	3.2
(mH) Line inductance	64	48	40
(°C) Peakttemperature	130	130	130
(mm) Pole width (N-N)	32	32	32
(L/min) Minimum flow rate	6	6	6
(N) Attraction thrust	6850	10200	13700
(Kg) Mass of primary	12.5	19	25
(M) Standard cable length	6	6	6

Stainless steel sheet metal		
Secondary model	(mm) Specifications	B
DLMFS-08N-128	128	64
DLMFS-08N-256	256	64
DLMFS-08N-384	384	64
DLMFS-08N-160	160	84
DLMFS-08S-160	160	84
DLMFS-08N-336	336	84
DLMFS-08S-336	336	84

DLMF-0904W

MECHANICAL DIMENSIONS

Scope of application: PCB processing equipment, laser processing equipment, CNC machine tool, etc.



DLMF-0904W

IRONCORE LINEAR MOTOR SPECIFICATIONS

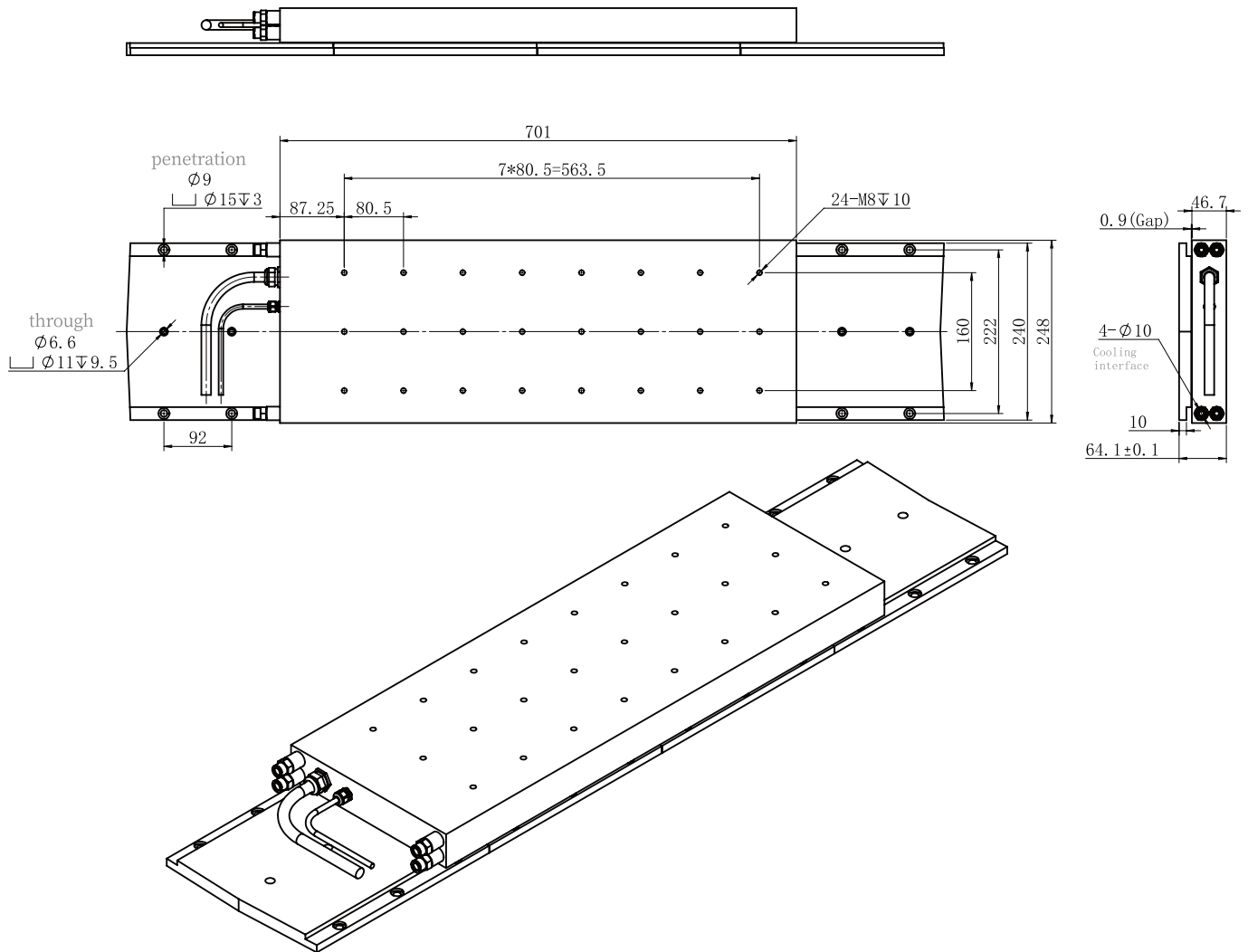
Primary model	DLMFP-0904W
(N) Continuous thrust	4619
(N) Peak thrust	9544
(N/√W) Motor constant	102
(W) Peak Continuous Loss Power	2056
(A) Continuous Current	30.1
(A) Peak Current	72
(N/A) thrust Constant	153.4
(Vs/m) Back EMF constant	90.7
Line resistance 20 °C (Ω)	1.5
(mH) Line inductance	15
(°C) Peakttemperature	130
(mm) Pole width (N-N)	32
(L/min) Minimum flow rate	6
(N) Attraction thrust	18100
(Kg) Mass of primary	31
(M) Standard cable length	6

Stainless steel sheet metal		
Secondary model	(mm) Specifications	B
DLMFS-09N-128	128	64
DLMFS-09N-256	256	64
DLMFS-09N-384	384	64
DLMFS-09N-160	160	84
DLMFS-09S-160	160	84
DLMFS-09N-336	336	84
DLMFS-09S-336	336	84

DLMF-1004W

MECHANICAL DIMENSIONS

Scope of application: High-speed machine tools, high-precision grinding machines, spark erosion equipment, wire cutting & processing equipment, laser processing equipment, etc.



DLMF-1004W

IRONCORE LINEAR MOTOR SPECIFICATIONS

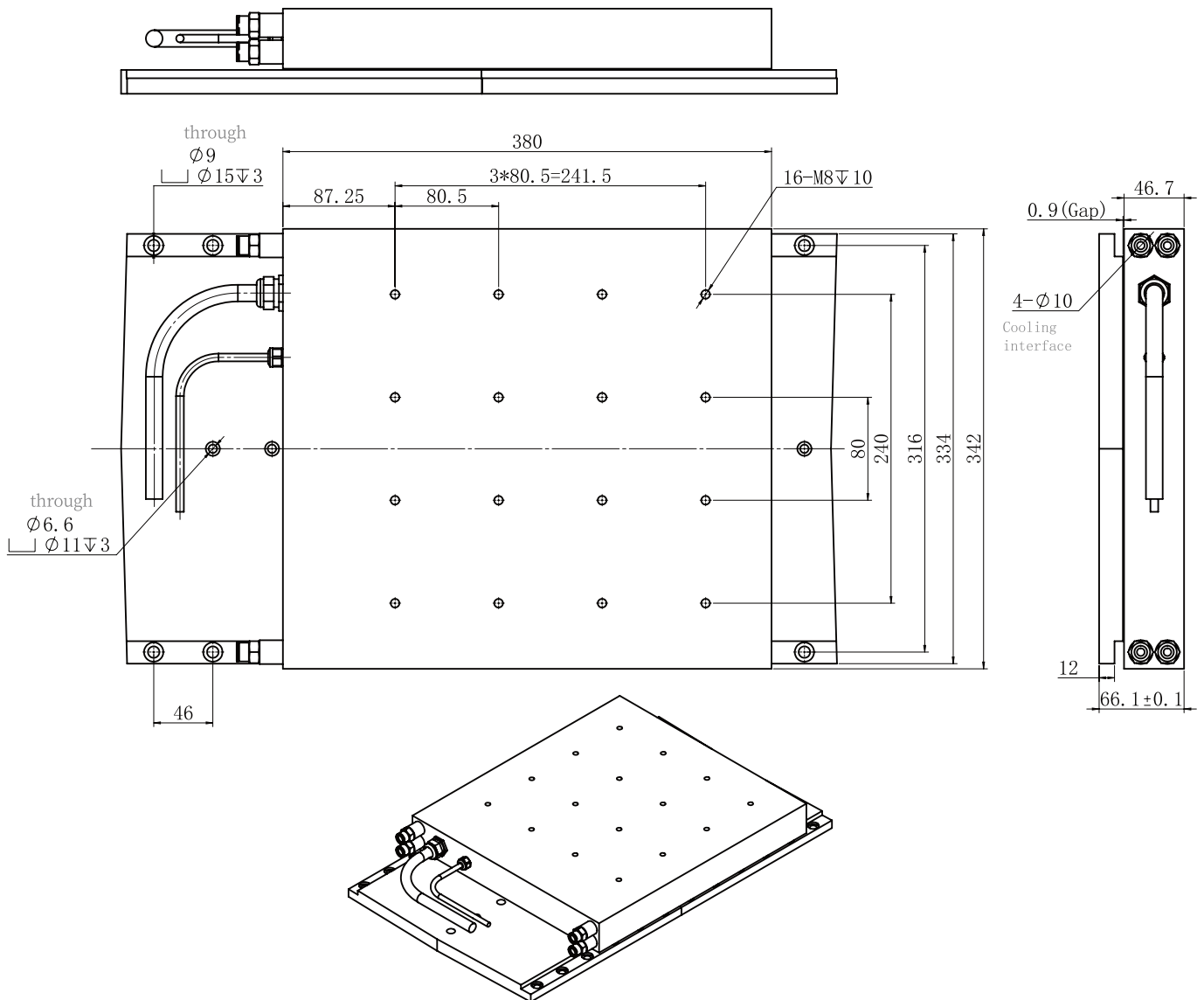
Primary model	DLMFP-1004W
(N) Continuous thrust	5200
(N) Peak thrust	14000
(N/√W) Motor constant	1000
(W) Peak Continuous Loss Power	2715
(A) Continuous Current	26
(A) Peak Current	75
(N/A) thrust Constant	200
(Vs/m) Back EMF constant	120
Line resistance 20 °C (Ω)	2.06
(mH) Line inductance	26
(°C) Peakttemperature	130
(mm) Pole width (N-N)	46
(L/min) Minimum flow rate	8
(N) Attraction thrust	24000
(Kg) Mass of primary	43
(M) Standard cable length	1.5

Black resin		
Secondary model	DLMFS-1001-184	DLMFS-1003-276
(mm) Specifications	184	276

DLMF-1102W

MECHANICAL DIMENSIONS

Scope of application: High-speed machine tools, high-precision grinding machines, spark erosion equipment, wire cutting & processing equipment, laser processing equipment, etc.



DLMF-1102W

IRONCORE LINEAR MOTOR SPECIFICATIONS

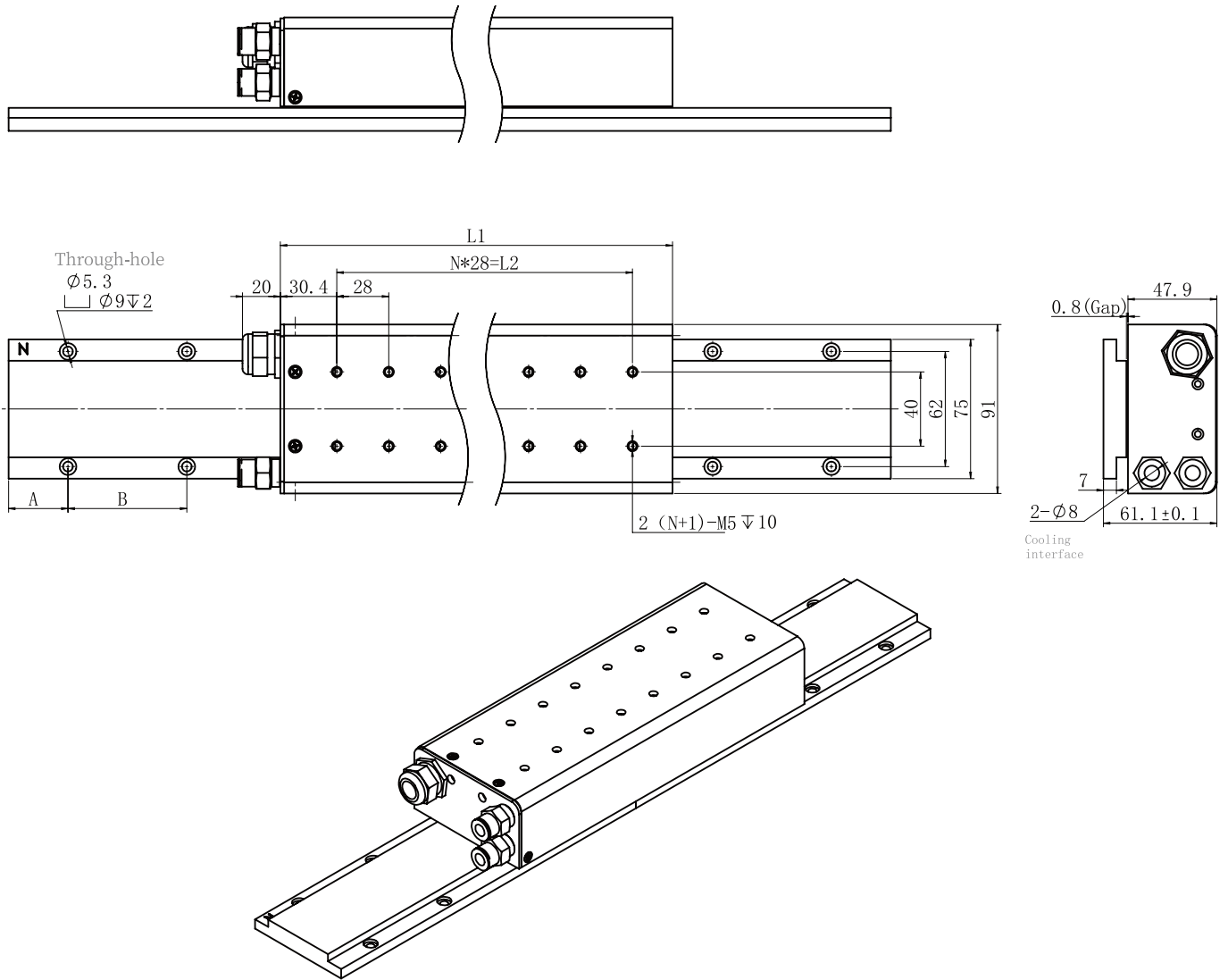
Primary model	DLMFP-1102W
(N) Continuous thrust	4000
(N) Peak thrust	10600
(N/√W) Motor constant	91
(W) Peak Continuous Loss Power	1924
(A) Continuous Current	26
(A) Peak Current	78
(N/A) thrust Constant	153.8
(Vs/m) Back EMF constant	88.9
Line resistance 20 °C (Ω)	1.46
(mH) Line inductance	18.5
(°C) Peakttemperature	130
(mm) Pole width (N-N)	46
(L/min) Minimum flow rate	8
(N) Attraction thrust	18600
(Kg) Mass of primary	23
(M) Standard cable length	1.5

Black resin		
Secondary model	DLMFS-1101-184	DLMFS-1103-276
(mm) Specifications	184	276

DLMF-50W

MECHANICAL DIMENSIONS

Scope of application: PCB processing equipment, laser processing equipment, CNC machine tool, etc.



Model	DLMFP-50-02W	DLMFP-50-03W	DLMFP-50-04W
L1	248	389	501
L2	196	308	420
N	7	11	15

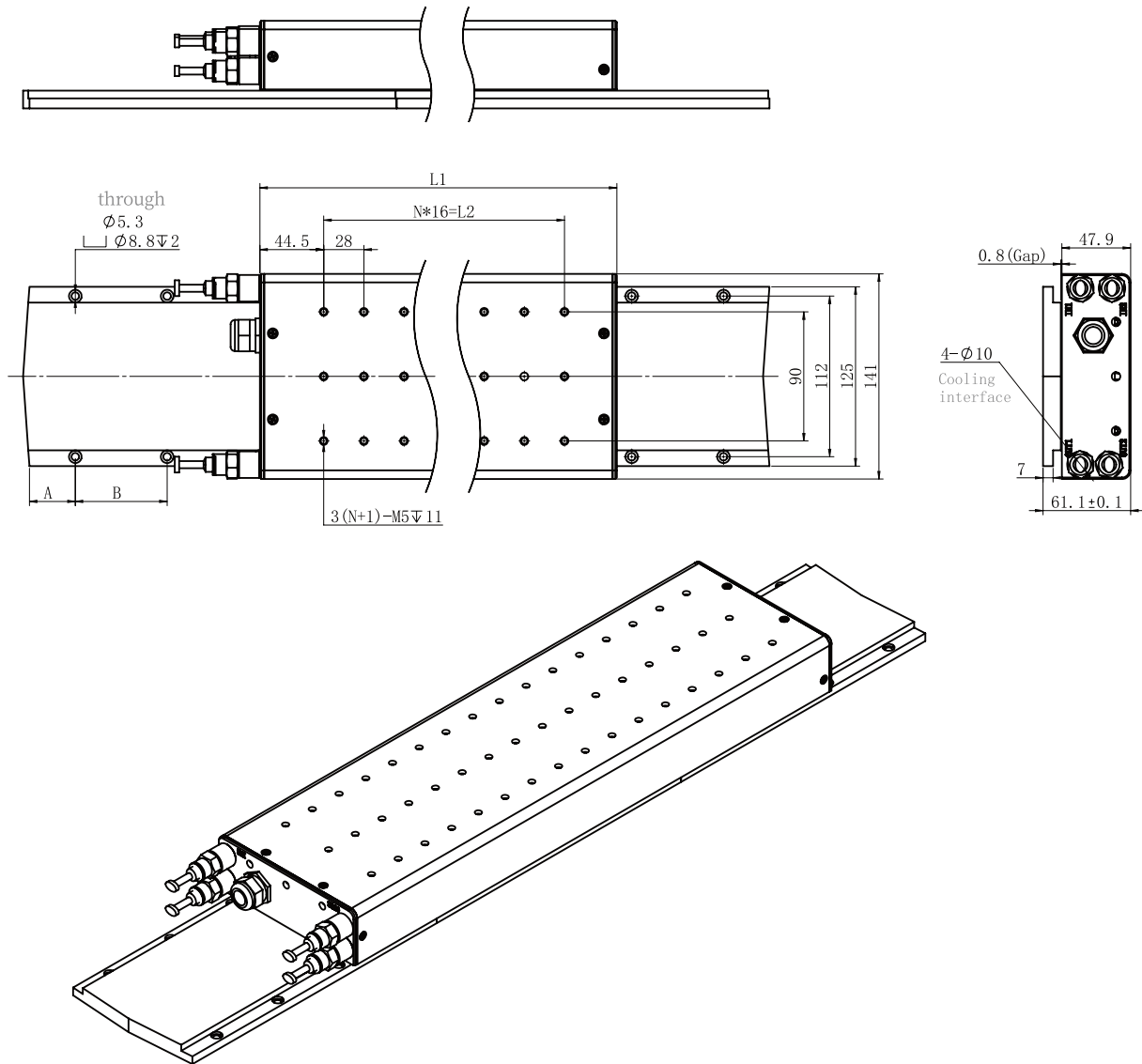
Primary model	DLMFP-50-02W	DLMFP-50-03W	DLMFP-50-04W
(N) Continuous thrust	609	913	1218
(N) Peak thrust	989	1483	1978
(N/√W) Motor constant	37.5	46	53
(W) Peak Continuous Loss Power	264	389	529
(A) Continuous Current	8.2	12.3	16.4
(A) Peak Current	14	21	28
(N/A) thrust Constant	74.2	74.2	74.2
(Vs/m) Back EMF constant	42.9	42.9	42.9
Line resistance 20 °C (Ω)	2.6	1.7	1.3
(mH) Line inductance	20	13	10
(°C) Peakttemperature	130	130	130
(mm) Pole width (N-N)	32	32	32
(L/min) Minimum flow rate	3	3	3
(N) Attraction thrust	2340	3500	4680
(Kg) Mass of primary	5	7	9
(M) Standard cable length	6	6	6

Stainless steel sheet metal			
Secondary model	(mm) Specifications	A	B
DLMFS-50N-128	128	32	64
DLMFS-50N-256	256	32	64
DLMFS-50N-384	384	32	64
DLMFS-50N-160	160	42	84
DLMFS-50S-160	160	42	84
DLMFS-50N-336	336	42	84
DLMFS-50S-336	336	42	84

DLMF-100W

MECHANICAL DIMENSIONS

Scope of application: PCB processing equipment, laser processing equipment, CNC machine tool, etc.



Model	DLMFP-100-02W	DLMFP-100-03W	DLMFP-100-04W
L1	277	389	501
L2	196	308	420
N	7	11	15

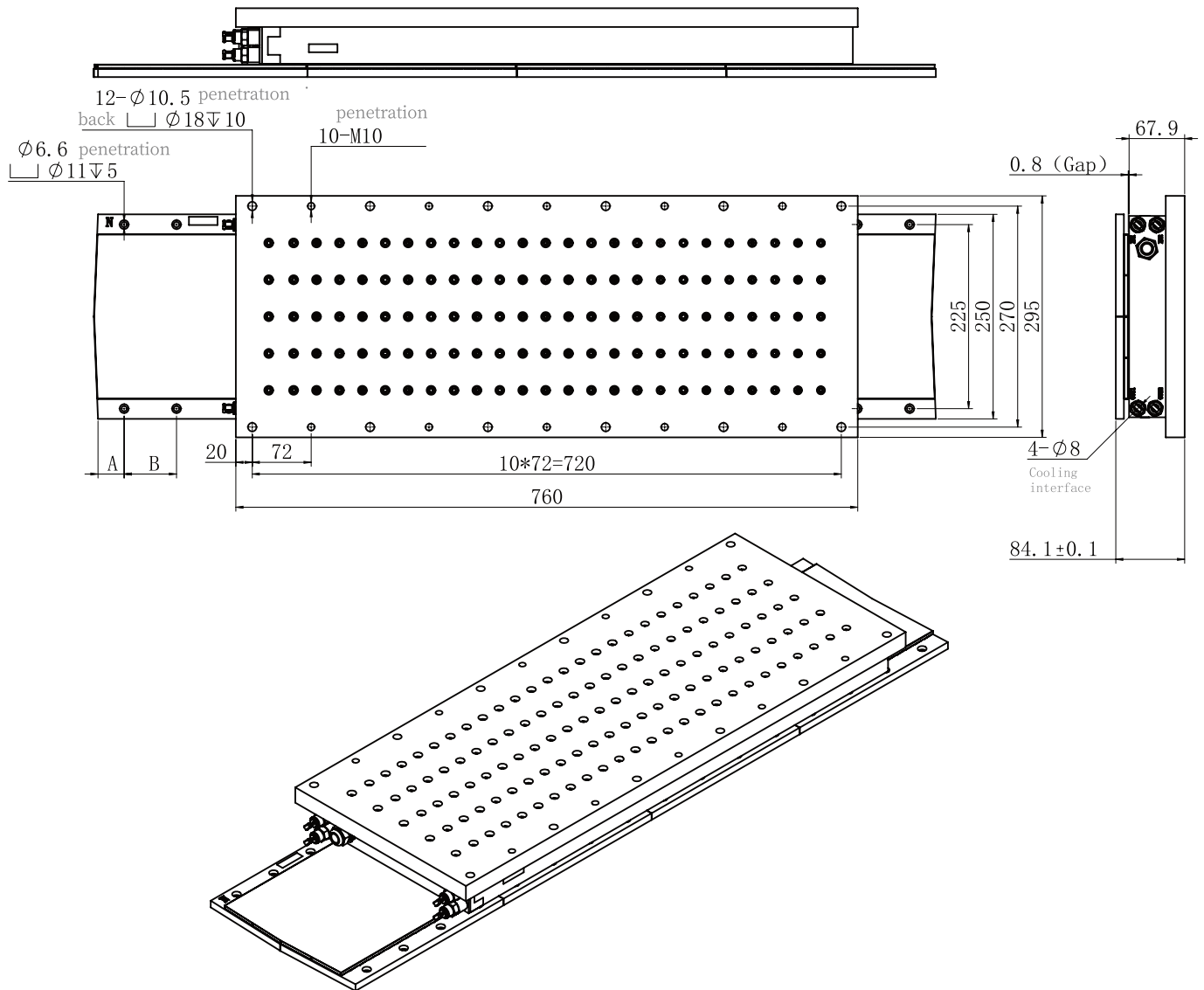
Primary model	DLMFP-100-02W	DLMFP-100-03W	DLMFP-100-04W
(N) Continuous thrust	1237	1976	2866
(N) Peak thrust	2159	3500	5260
(N/√W) Motor constant	61	66.5	86
(W) Peak Continuous Loss Power	408	882	1112
(A) Continuous Current	7.5	13.5	17.5
(A) Peak Current	14	28	36
(N/A) thrust Constant	164	164	164
(Vs/m) Back EMF constant	96	96	96
Line resistance 20 °C (Ω)	4.8	3.2	2.4
(mH) Line inductance	49.8	33	24.6
(°C) Peakttemperature	130	130	130
(mm) Pole width (N-N)	32	32	32
(L/min) Minimum flow rate	6	6	6
(N) Attraction thrust	4680	7000	9360
(Kg) Mass of primary	10	14	18
(M) Standard cable length	6	6	6

Stainless steel sheet metal			
Secondary model	(mm) Specifications	A	B
DLMFS-100N-128	128	32	64
DLMFS-100N-256	256	32	64
DLMFS-100N-384	384	32	64
DLMFS-100N-160	160	42	84
DLMFS-100S-160	160	42	84
DLMFS-100N-336	336	42	84
DLMFS-100S-336	336	42	84

DLMF-200-06W

MECHANICAL DIMENSIONS

Scope of application: PCB processing equipment, laser processing equipment, CNC machine tool, etc.



DLMF-200-06W

IRONCORE LINEAR MOTOR SPECIFICATIONS

Primary model	DLMFP-200-06W
(N) Continuous thrust	6490
(N) Peak thrust	12150
(N/√W) Motor constant	135.2
(W) Peak Continuous Loss Power	2303
(A) Continuous Current	28
(A) Peak Current	56
(N/A) thrust Constant	231.8
(Vs/m) Back EMF constant	133.5
Line resistance 20 °C (Ω)	1.52
(mH) Line inductance	16
(°C) Peakttemperature	130
(mm) Pole width (N-N)	32
(L/min) Minimum flow rate	6
(N) Attraction thrust	27800
(Kg) Mass of primary	77
(M) Standard cable length	6

Stainless steel sheet metal			
Secondary model	(mm) Specifications	A	B
DLMFS-200N-128	128	32	64
DLMFS-200N-256	256	32	64
DLMFS-200N-384	384	32	64
DLMFS-200N-160	160	42	84
DLMFS-200S-160	160	42	84
DLMFS-200N-336	336	42	84
DLMFS-200S-336	336	42	84