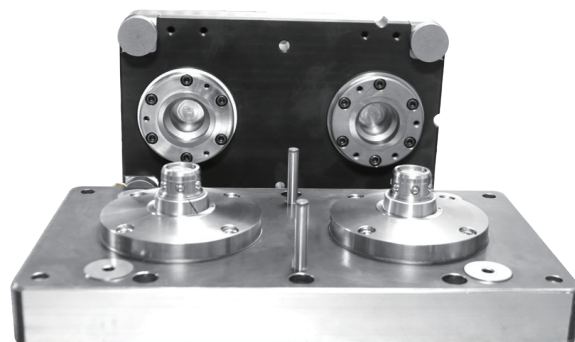


# ZERO-POINT CLAMPING SYSTEM

## ZERO POSITION SERIES

This product is mainly used in machining centers, where the zero point is kept constant when the workpiece, process and machine tool are switched, saving the auxiliary time for re-correcting the zero point, ensuring the continuity of work and improving work efficiency.



# ZERO-POINT CLAMPING SYSTEM

## TECHNICAL PARAMETERS

This product is mainly used in machining centers, where the zero point is kept constant when the workpiece, process and machine tool are switched, saving the auxiliary time for re-correcting the zero point, ensuring the continuity of work and improving work efficiency.

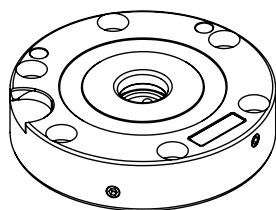
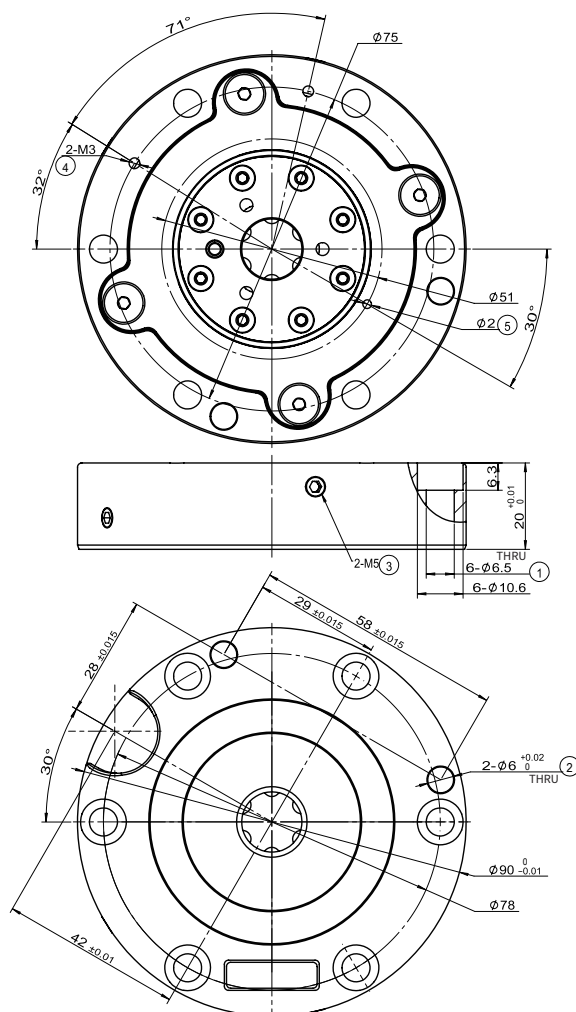
## MAIN TECHNICAL PARAMETER

Product model	ZPC-90/20
(mm) Repeat positioning accuracy	$\leq 0.005$
(N) Tension force (N)	$\geq 1600$ (Single clamp)
(MPa) Rated working pressure	0.6
(N) Tension force without air pressure	$\geq 300$ (Single clamp)
(MPa) Working pressure	0.4~0.7
(mm) Clamping device dimensions	$\phi 90 \times 20$



## SIZE CHART

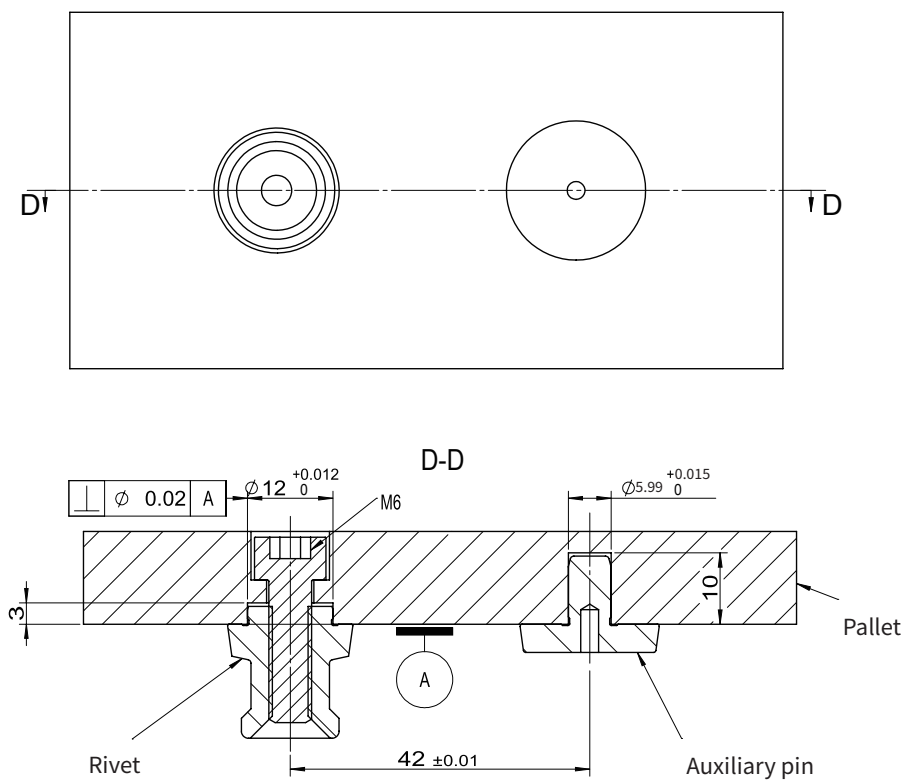
- ① Mounting holes
- ② Install positioning holes
- ③ Side air vent
- ④ Bottom air vent
- ⑤ Dust gas detection hole



### PALLET AND ACCESSORIES

Note:

1. Rivet and auxiliary pin are optional accessories;
2. The Pallet can be customized according to customer needs;
3. When the tray is removed, if it is not used for a long time or the tray is removed for cleaning, It is necessary to put the nail or special protective sleeve on the central cone to prevent scratching the cone.



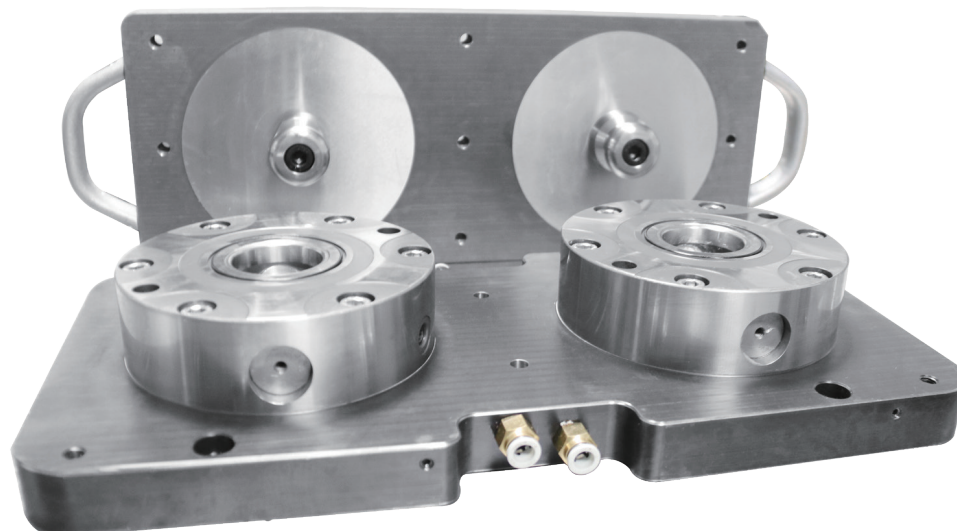
# ZERO-POINT CLAMPING SYSTEM

## TECHNICAL PARAMETERS

High clamping force: strong clamping force can be produced when clamping to ensure the stability of clamping High precision: repeat positioning accuracy is not greater than 0.005mm

High stability: high quality stainless steel, with excellent wear resistance and rust resistance

High efficiency: excellent positioning accuracy, fast and convenient clamping method, so that the efficiency of replacing the workpiece is greatly improved



## MAIN TECHNICAL PARAMETER

Product model	ZPC-100/60
(mm) Repeat positioning accuracy	$\leq 0.005$
(N) Tension force (N)	$\geq 10000$ (Single clamp)
(MPa) Rated working pressure	0.6
(N) Tension force without air pressure	$\geq 2000$ (Single clamp)
(MPa) Working pressure	0.4~0.7
(mm) Clamping device dimensions	$\phi 100 \times 60$

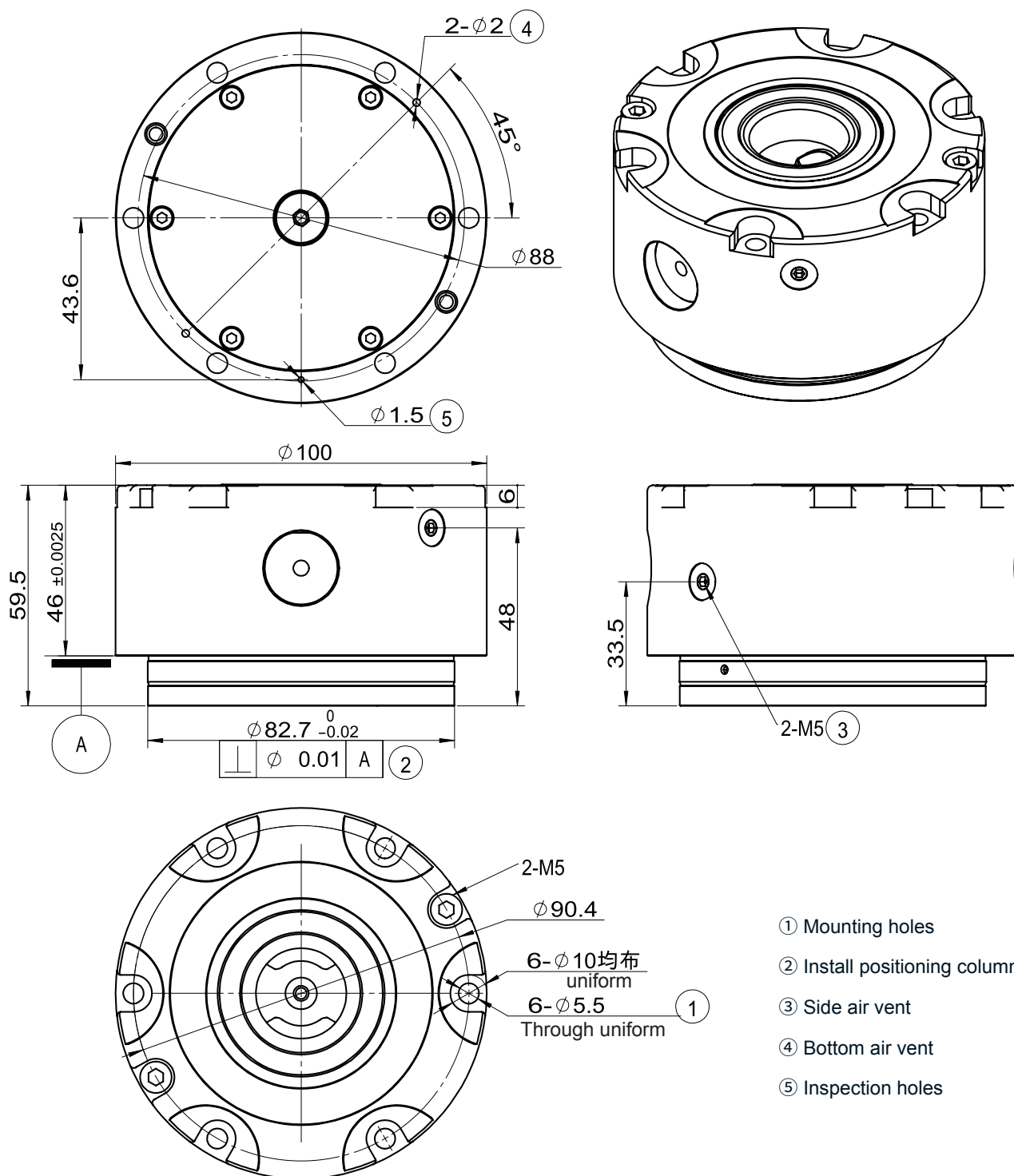


# ZERO-POINT CLAMPING SYSTEM

## TECHNICAL PARAMETERS

Note:

1. Zero positioning components can be arbitrarily combined into two stations, four stations, six stations according to the actual demand.



- ① Mounting holes
- ② Install positioning column
- ③ Side air vent
- ④ Bottom air vent
- ⑤ Inspection holes

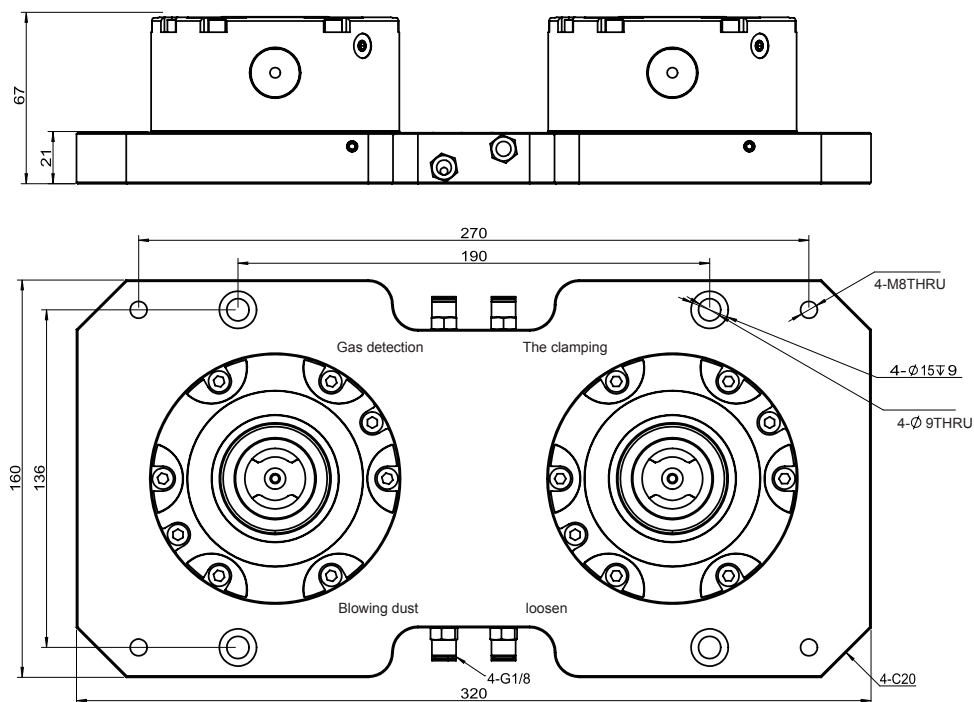
# ZERO-POINT CLAMPING SYSTEM

## TECHNICAL PARAMETERS

### ZERO POSITIONING (TWO STATIONS) BASE PLATE

Note:

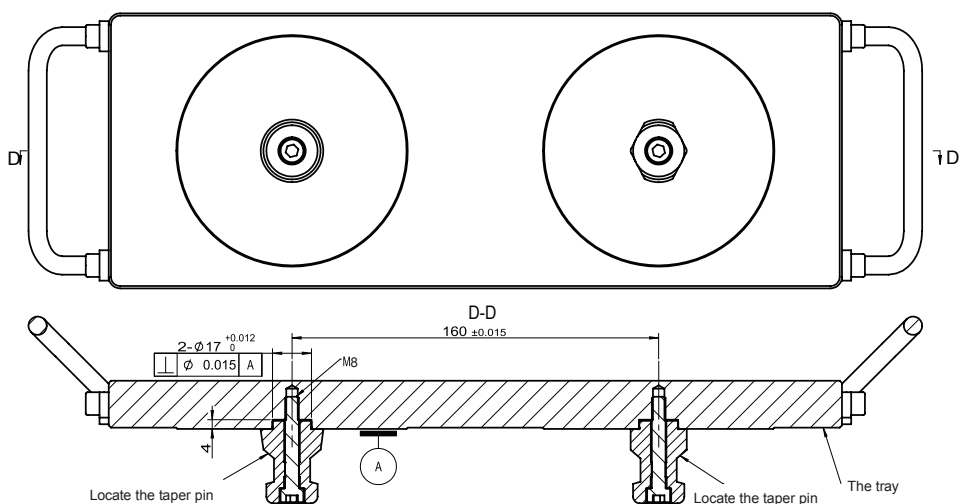
1. When the tray is removed, if it is not used for a long time or the tray is removed for cleaning, the special protective sleeve should be put on the central cone to prevent scratching the cone.



### ZERO POSITION (TWO STATIONS) PALLET

Note:

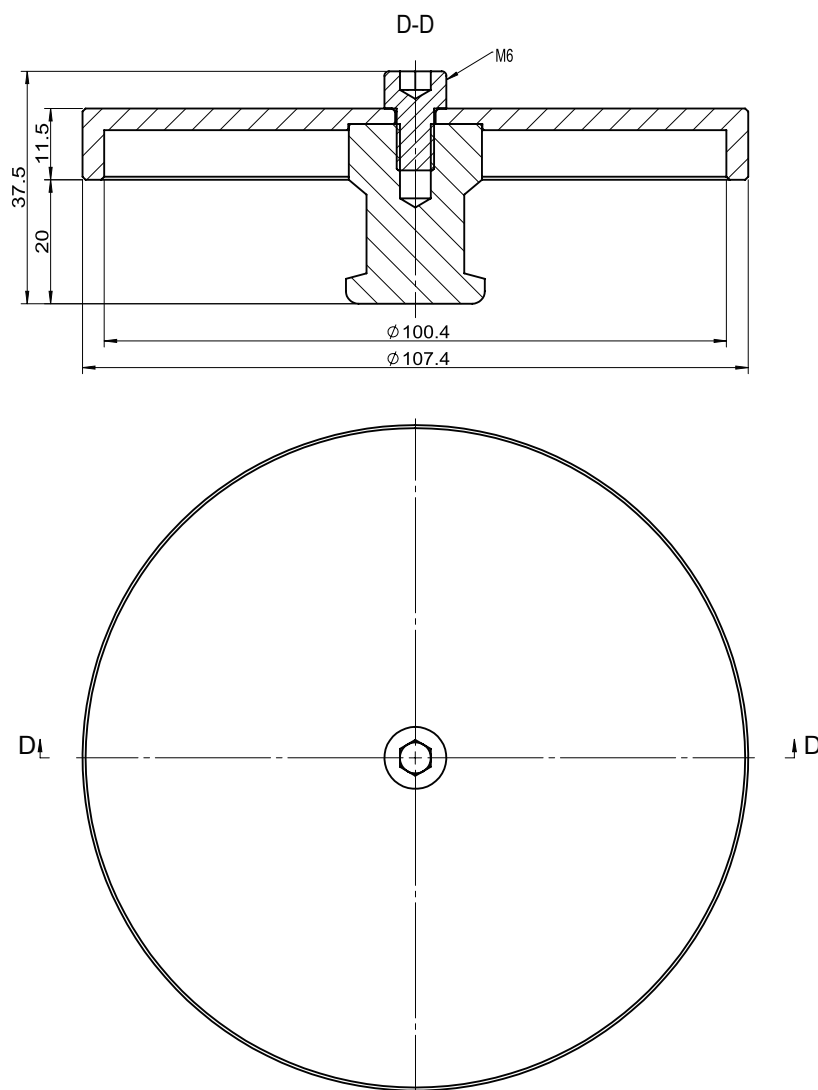
1. Positioning cone pin and positioning cranberry cone pin are optional accessories;
2. The Pallet can be customized according to customer needs.



# ZERO-POINT CLAMPING SYSTEM

## TECHNICAL PARAMETERS

### ZERO POINT POSITIONING PROTECTION COVER



# ZERO-POINT CLAMPING SYSTEM

## TECHNICAL PARAMETERS

High clamping force: strong clamping force can be produced when clamping to ensure the stability of clamping

High precision: repeat positioning accuracy is not greater than 0.005mm

High stability: high quality stainless steel, with excellent wear resistance and rust resistance

High efficiency: excellent positioning accuracy, fast and convenient clamping method, so that the efficiency of replacing the workpiece is greatly improved



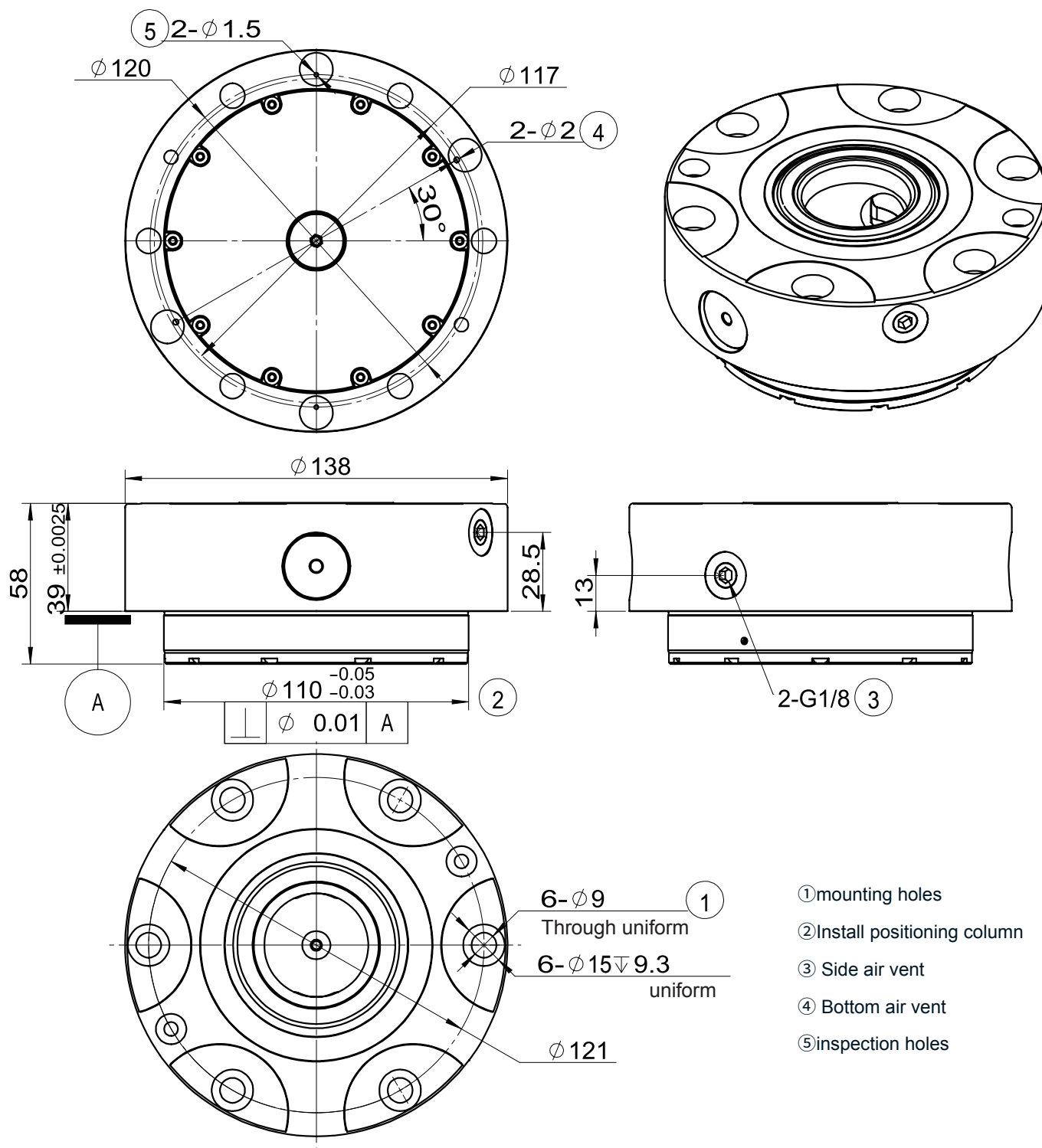
## MAIN TECHNICAL PARAMETER

Product model	ZPC-138/58
(mm) Repeat positioning accuracy	≤0.005
(N) Tension force (N)	≥25000 (Single clamp)
(MPa) Rated working pressure	0.6
(N) Tension force without air pressure	≥7000 (Single clamp)
(MPa) Working pressure	0.4~0.7
(mm) Clamping device dimensions	φ138*58

# ZERO-POINT CLAMPING SYSTEM

## TECHNICAL PARAMETERS

### ZERO LOCATING ASSEMBLY



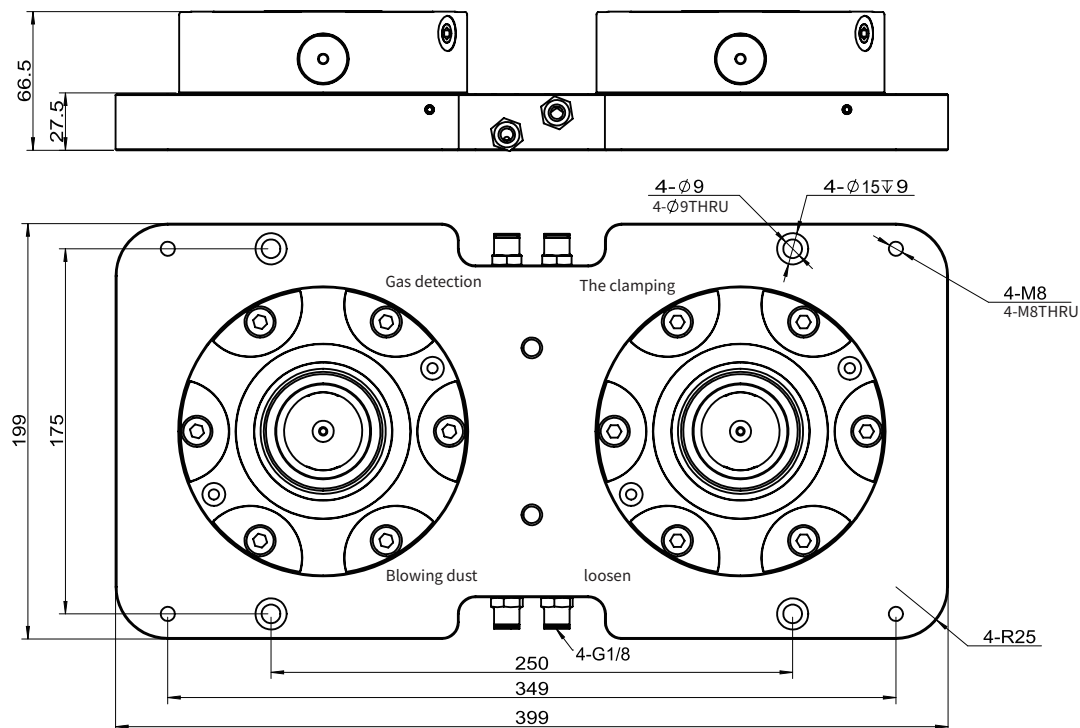
# ZERO-POINT CLAMPING SYSTEM

## TECHNICAL PARAMETERS

### ZERO POSITIONING (TWO STATIONS) BASE PLATE

Note:

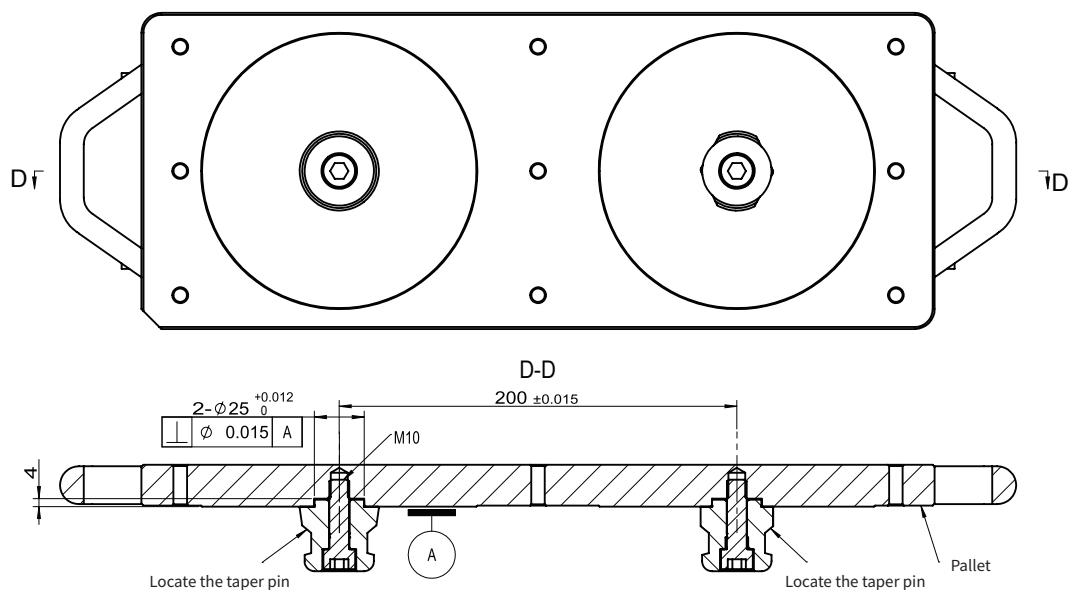
1. When the tray is removed, if it is not used for a long time or if the tray is removed for cleaning, the special protective sleeve should be put on the central cone to prevent scratching the cone.



### ZERO POSITION (TWO STATIONS) PALLET

Note:

1. positioning cone pin and positioning taper pin are optional accessories;
2. The Pallet can be customized according to customer needs.

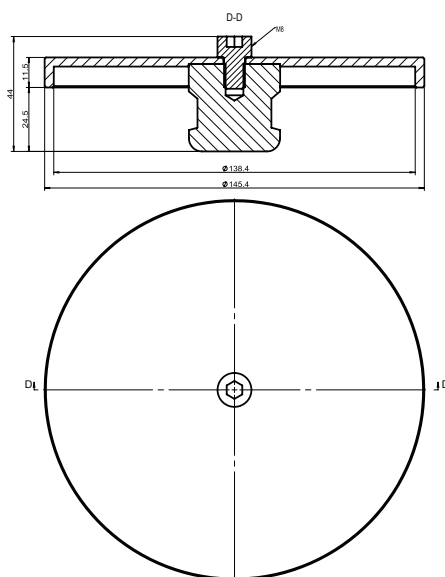




# ZERO-POINT CLAMPING SYSTEM

## TECHNICAL PARAMETERS

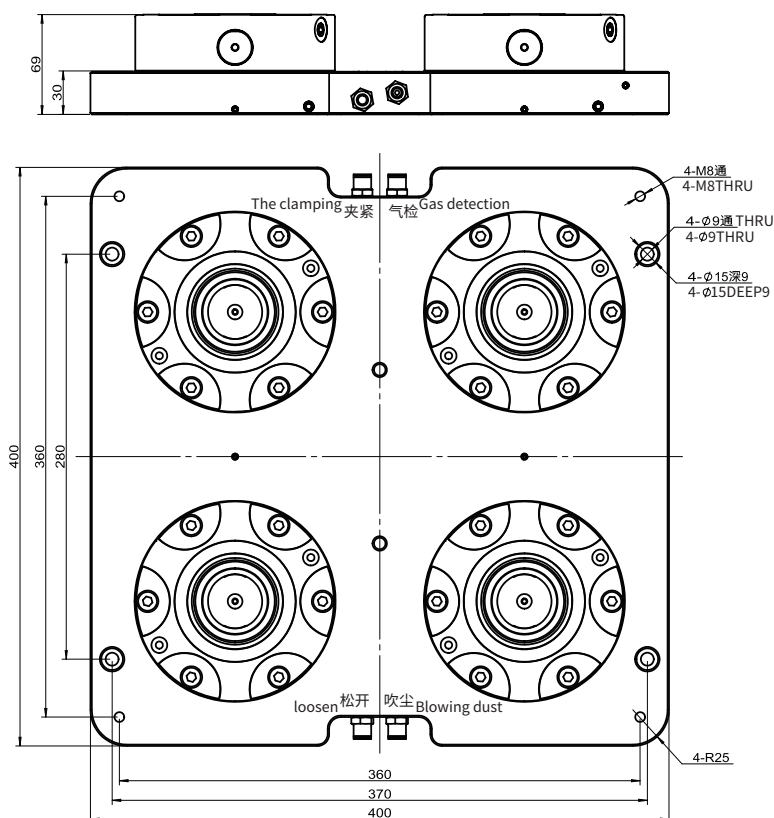
### ZERO POINT POSITIONING PROTECTION COVER



### ZERO POSITIONING (FOUR STATION) BASE PLATE

Note:

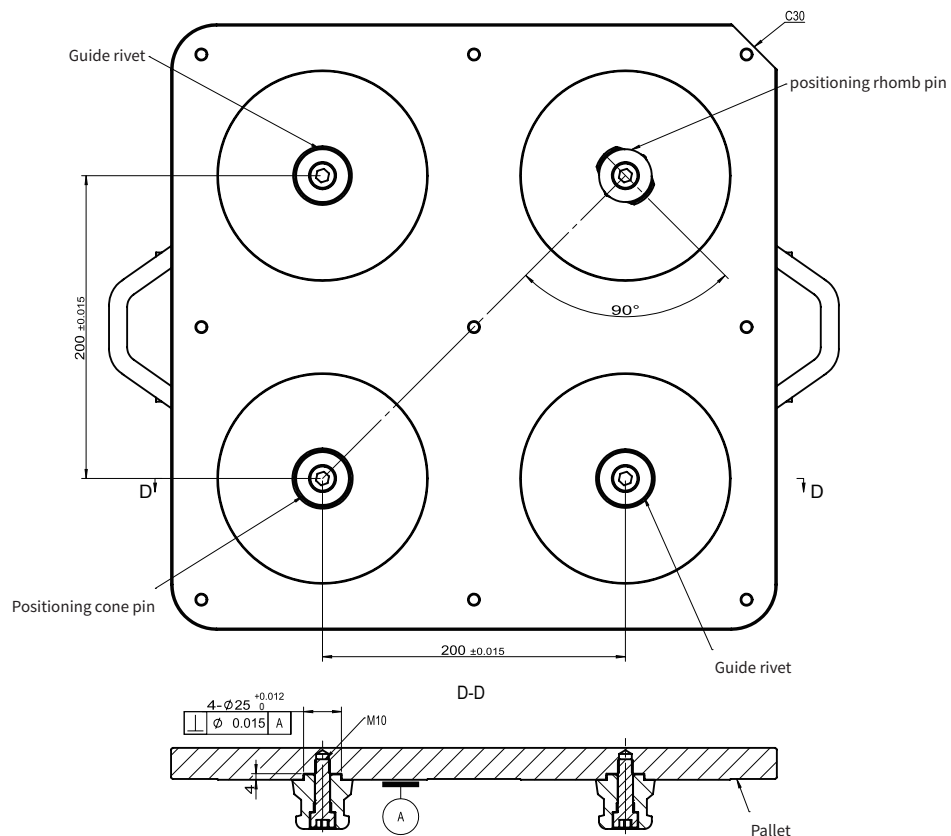
1. When the tray is removed, if it is not used for a long time or cleaned after the tray is removed, the special protective sleeve should be put on the central cone to prevent scratching the cone.



### ZERO POSITION (FOUR STATION) TRAY

**Note:**

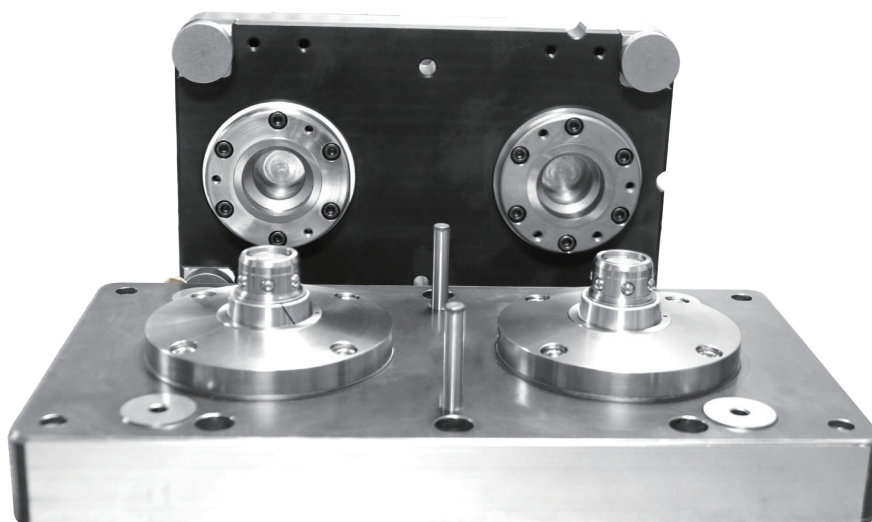
1. Positioning cone pin, positioning rhomb pin and guide rivet are optional accessories
2. The Pallet can be customized according to customer needs.



# ZERO-POINT CLAMPING SYSTEM

## TECHNICAL PARAMETERS

High clamping force: strong clamping force can be produced when clamping to ensure the stability of clamping  
High precision: repeat positioning accuracy is not greater than 0.003mm  
High stability: high quality stainless steel, with excellent wear resistance and rust resistance  
High efficiency: excellent positioning accuracy, fast and convenient clamping method, so that the efficiency of replacing the workpiece is greatly improved



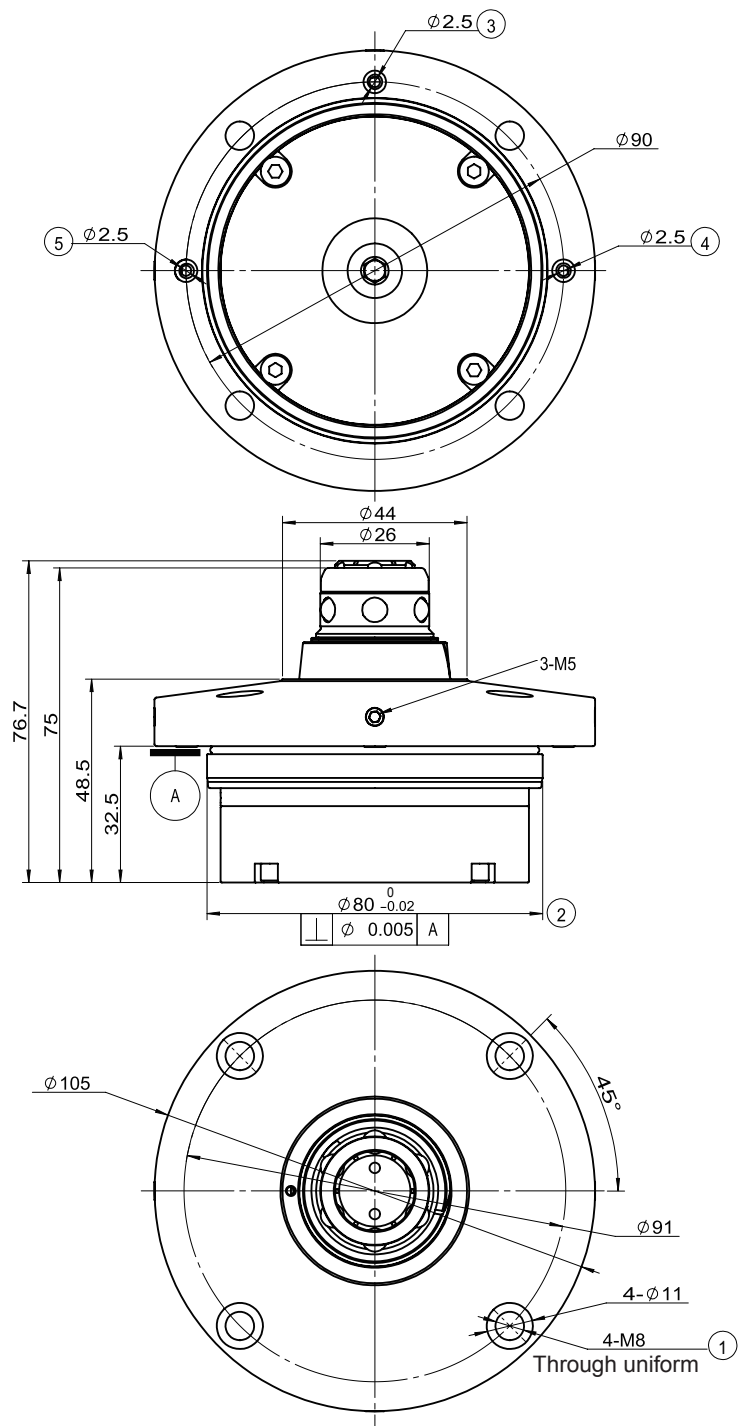
## MAIN TECHNICAL PARAMETER

Product model	ZPC-M2-255/330-10A
(mm) Repeat positioning accuracy	$\leq 0.003$
(N) Tension force (N)	$\geq 8500$ (Single clamp)
(MPa) Rated working pressure	0.6
(N) Tension force without air pressure	$\geq 850$ (Single clamp)
(MPa) Working pressure	0.4~0.7
(mm) Clamping device dimensions	$\phi 105 \times 75$

# ZERO-POINT CLAMPING SYSTEM

## TECHNICAL PARAMETERS

### POSITION CLAMP

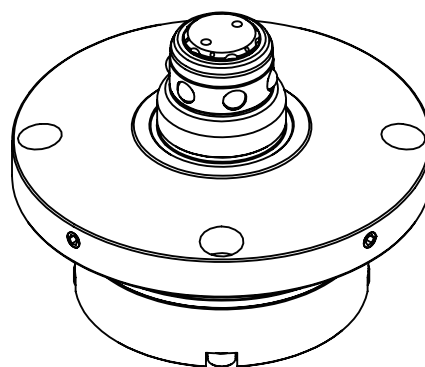
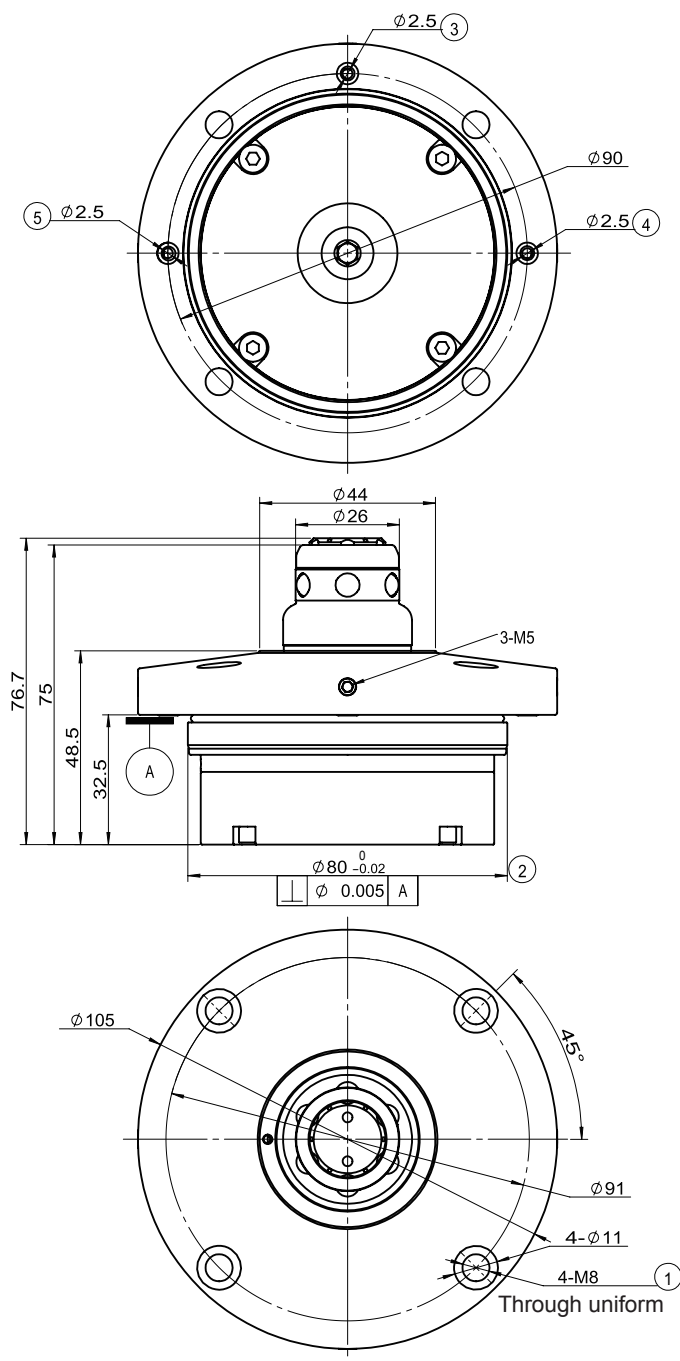


- ① mounting holes
- ② Install positioning column
- ③ Tighten the air vent
- ④ blowing air hole
- ⑤ Air check vent

# ZERO-POINT CLAMPING SYSTEM

## TECHNICAL PARAMETERS

### GUIDE CLAMP

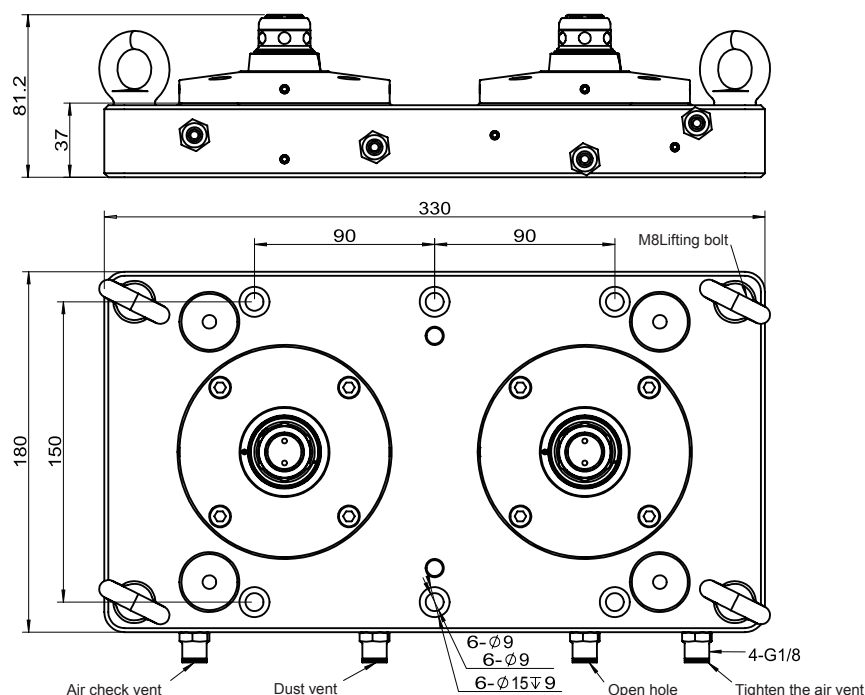


- ① mounting holes
- ② Install positioning column
- ③ Tighten the air vent
- ④ blowing air hole
- ⑤ Air check vent

# ZERO-POINT CLAMPING SYSTEM

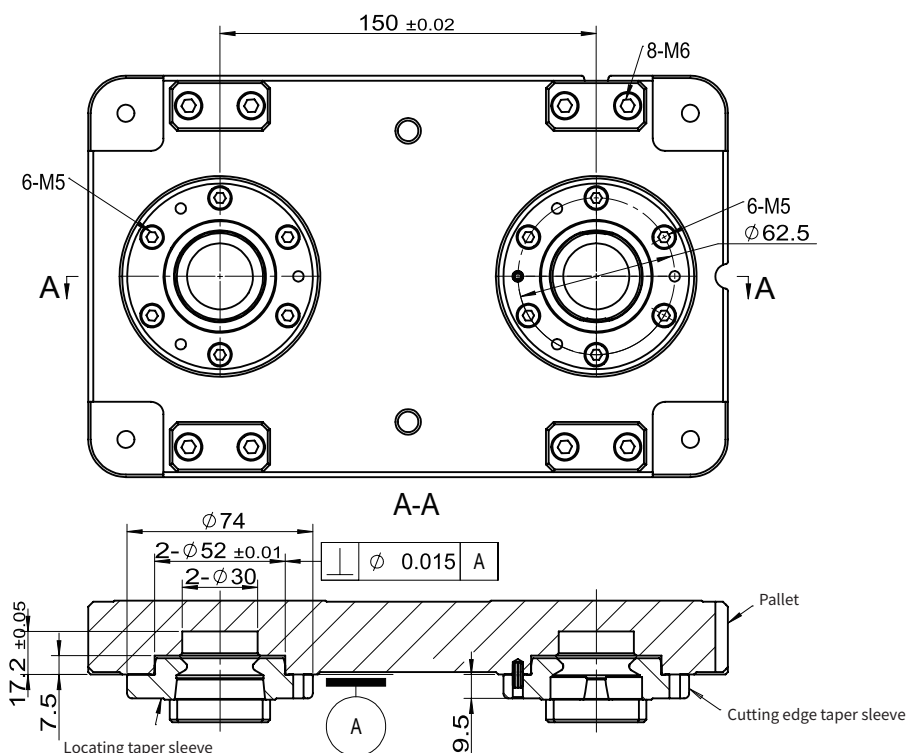
## TECHNICAL PARAMETERS

### ZERO POSITIONING (TWO STATIONS) BASE PLATE



### ZERO POSITION (TWO STATIONS) PALLET

- Notes:
1. Positioning cone sleeve and pin edge cone sleeve are optional accessories;
  2. The pallet can be customized according to customer needs;
  3. positioning cone sleeve, pin edge cone sleeve with positioning clamp.

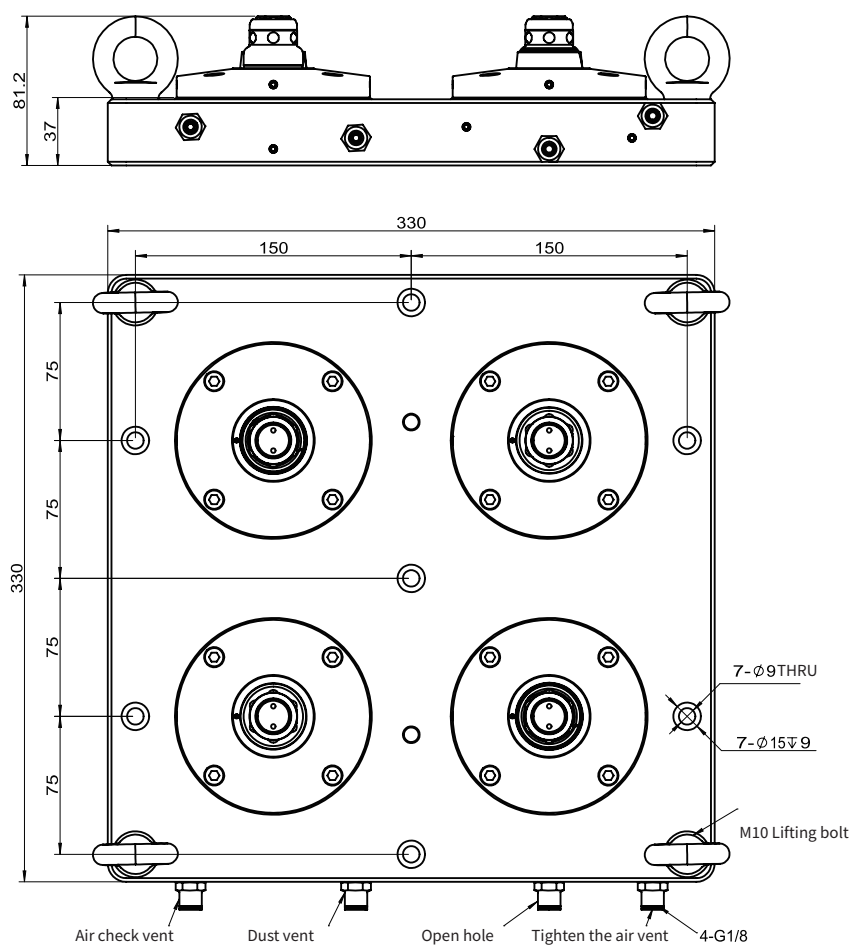




# ZERO-POINT CLAMPING SYSTEM

## TECHNICAL PARAMETERS

### ZERO POSITIONING (FOUR STATION) BASE PLATE



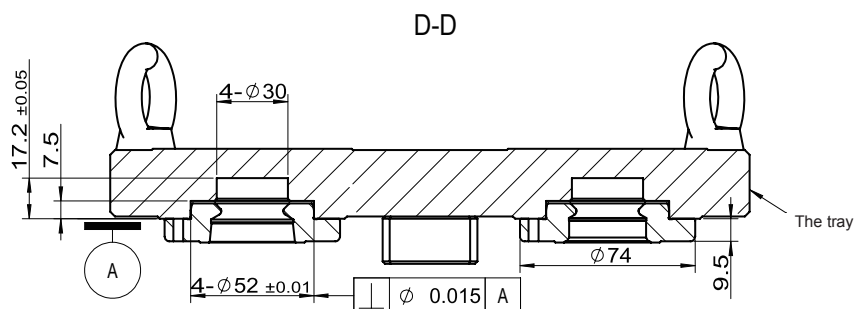
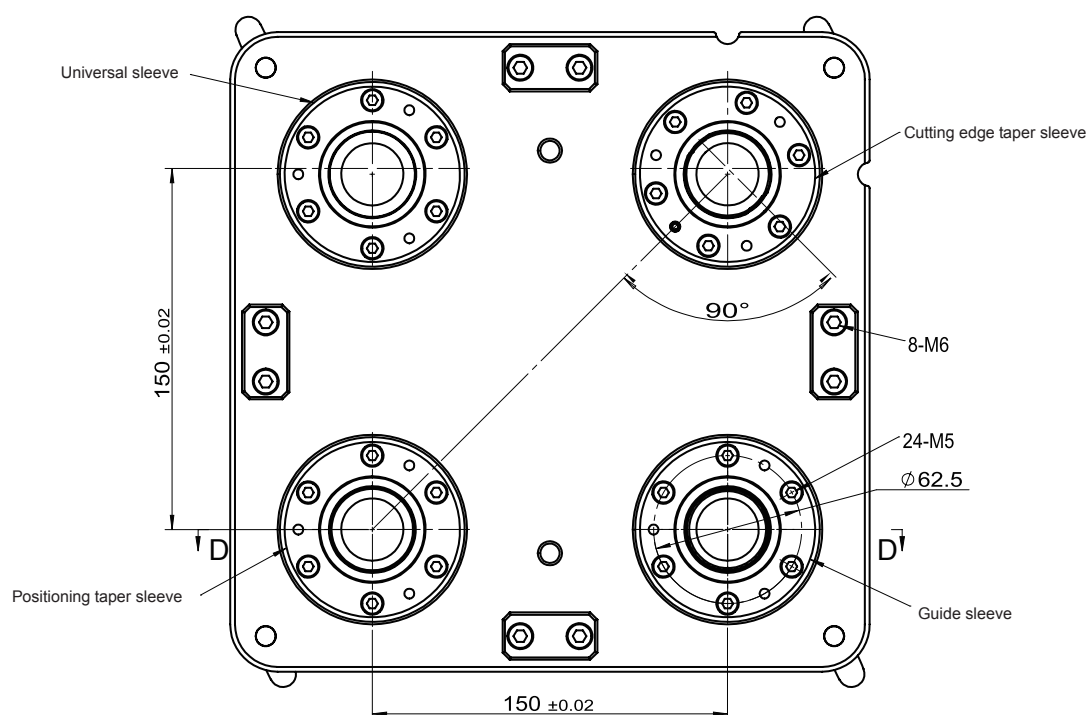
# ZERO-POINT CLAMPING SYSTEM

## TECHNICAL PARAMETERS

### ZERO POSITION (FOUR STATION) PALLET

#### Notes :

1. positioning taper sleeve, pin edge cone sleeve, guide sleeve, universal sleeve are optional accessories;
2. The Pallet can be customized according to customer needs;
3. positioning taper sleeve, pin edge cone sleeve and positioning clamp with guide sleeve and guide clamp with.



# ZERO-POINT CLAMPING SYSTEM

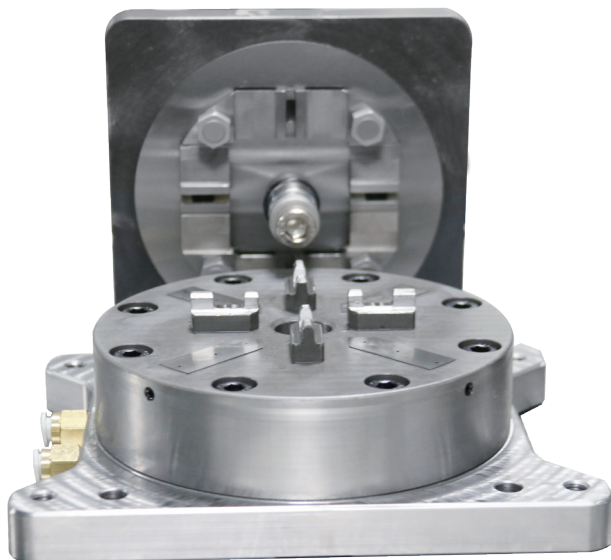
## TECHNICAL PARAMETERS

High clamping force: strong clamping force can be produced when clamping to ensure the stability of clamping

High precision: repeat positioning accuracy is not greater than 0.005mm

High stability: high quality stainless steel, with excellent wear resistance and rust resistance

High efficiency: excellent positioning accuracy, fast and convenient clamping method, so that the efficiency of replacing the workpiece is greatly improved



## MAIN TECHNICAL PARAMETER

Product model	ZPC-150/36
(mm) Repeat positioning accuracy	$\leq 0.005$
(N) Tension force (N)	$\geq 7000$ (Single clamp)
(MPa) Rated working pressure	0.6
(mm) Overall dimensions	198*158
(MPa) Working pressure	0.55~0.8
(mm) Clamping device dimensions	$\phi 150 \times 49$

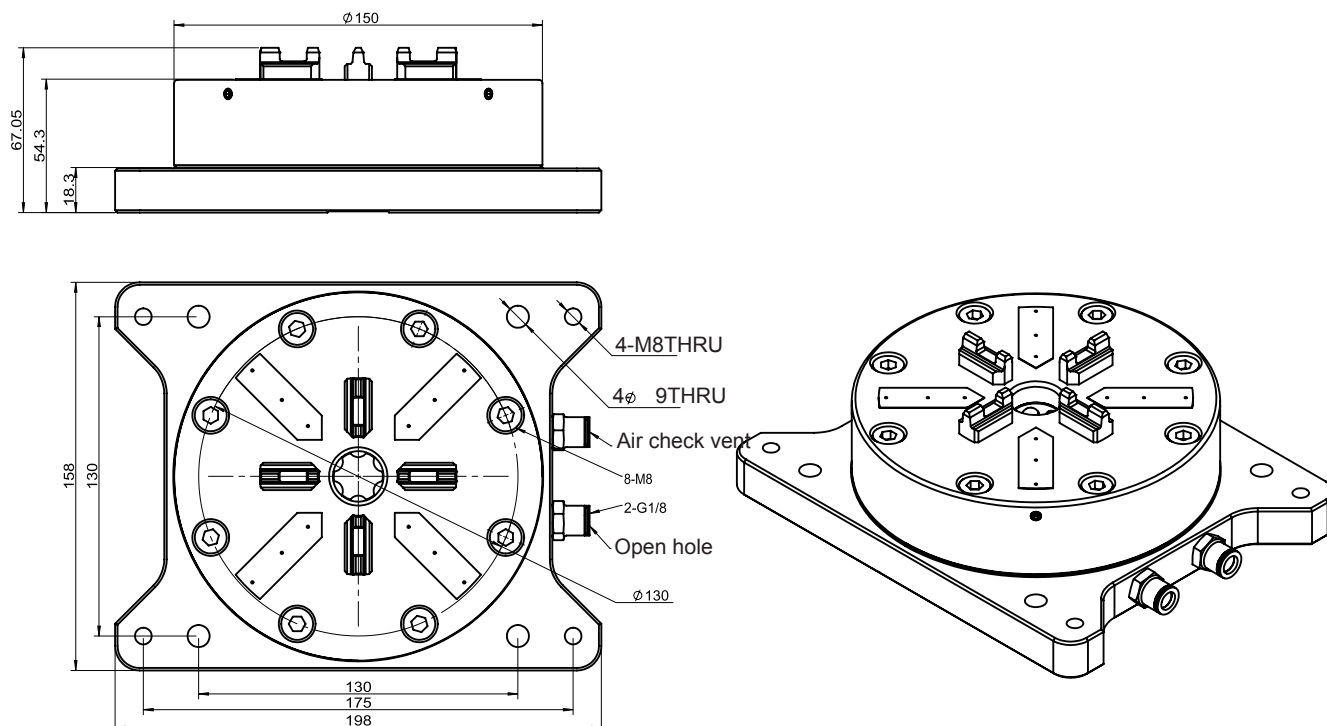
# ZERO-POINT CLAMPING SYSTEM

## TECHNICAL PARAMETERS

### ZERO POSITION BASE PLATE

**Note:**

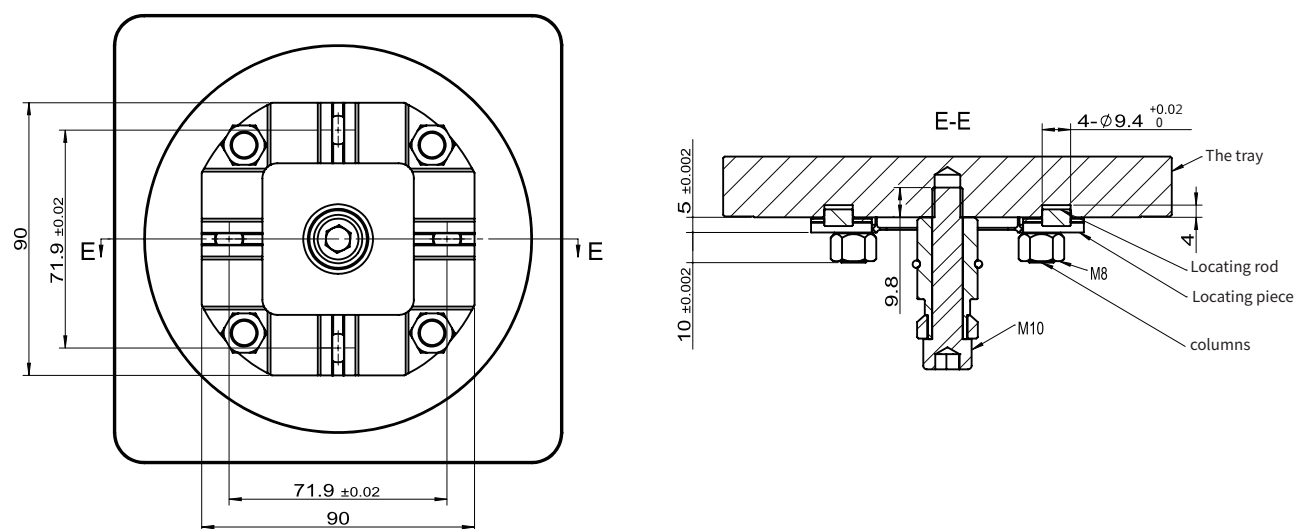
1. When the tray is removed, if it is not used for a long time or the tray is removed for cleaning, it is necessary to put the special protective cover on the center surface to prevent scratching iron filings and rust liquid from flooding into the body.



### ZERO SETTING PALLET

**Note:**

1. The Pallet can be customized according to customer requirements.



# ZERO-POINT CLAMPING SYSTEM

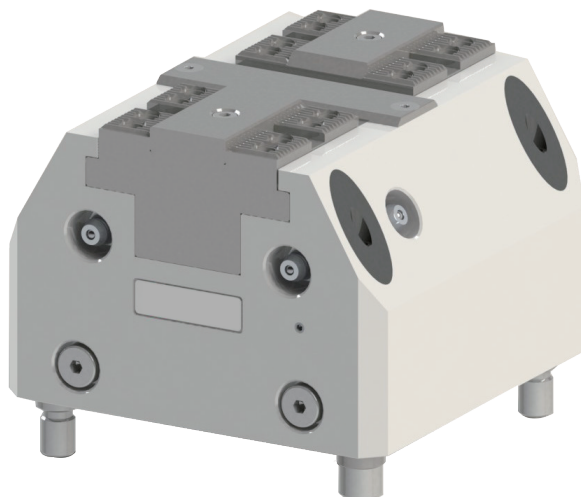
## TECHNICAL PARAMETERS

### PNEUMATIC PARALLEL VICE

High clamping force: strong clamping force can be produced when clamping to ensure the stability of clamping

High precision: repeat positioning accuracy is not greater than 0.01mm

High stability: Using high quality stainless steel and excellent lubrication system, with excellent wear resistance and rust resistance



## MAIN TECHNICAL PARAMETER

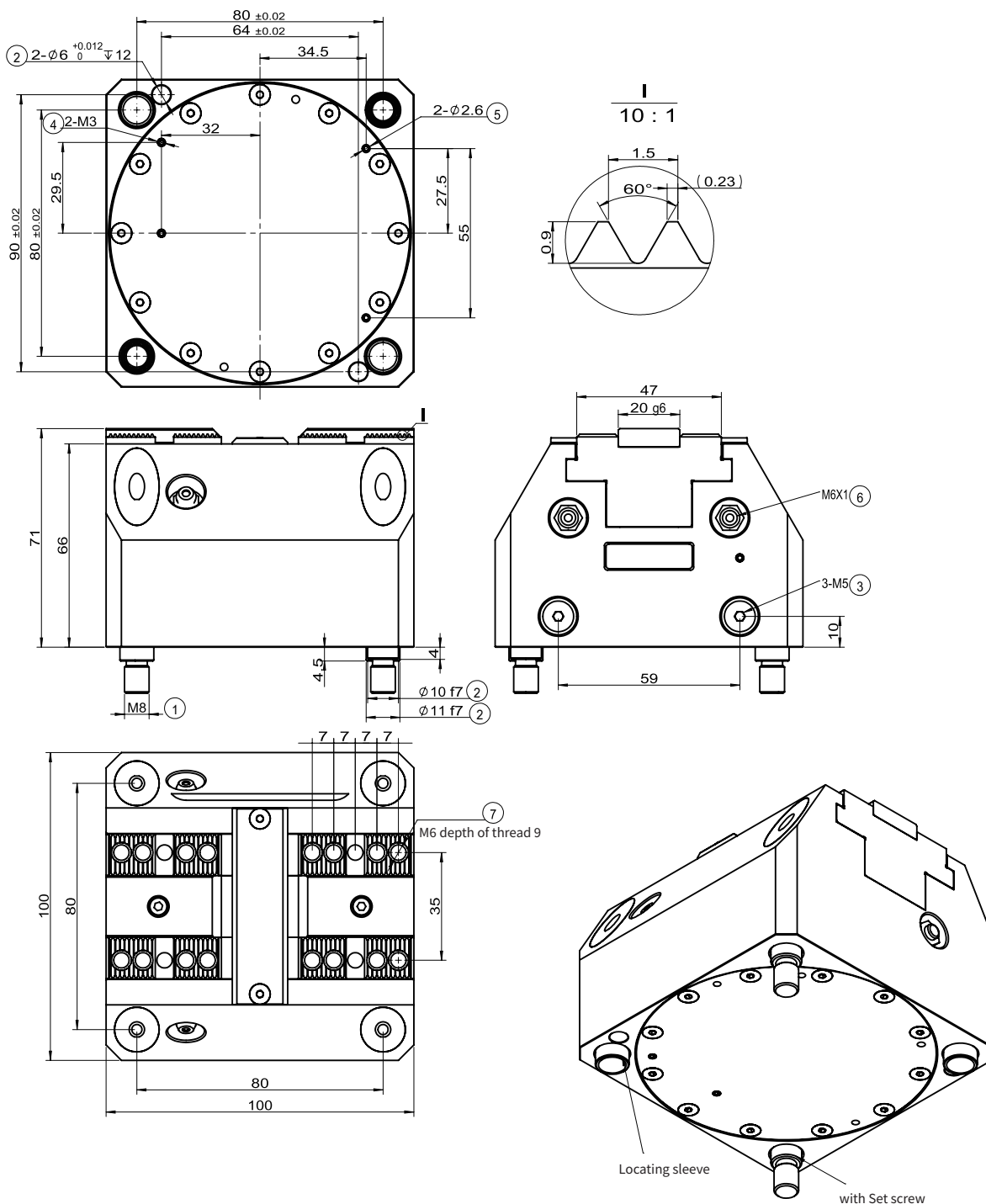
Product model		DHQP-100/2
(mm)	Repeat positioning accuracy	≤0.01
(MPa)	Rated working pressure	0.6
(N)	Clamping force	11000
(MPa)	Working pressure	0.4~0.9
(mm)	Single refers to travel	2
(mm)	Clamping device dimensions	100*100*71

# ZERO-POINT CLAMPING SYSTEM

## TECHNICAL PARAMETERS

### Note:

1. Positioning sleeve and positioning screw. Only one of the two positioning methods can be selected use between Positioning sleeve and with set screw, do not use two positioning methods at the same time.



- |   |                              |
|---|------------------------------|
| ① Vice mounting hole                      | ⑤ The bottom of the oil hole |
| ② Positioning holes for vice installation | ⑥ Side oil injection hole    |
| ③ Side air vent                           | ⑦ Soft claw mounting hole    |
| ④ Bottom air vent                         |                              |