

# POWER CHUCK PULL-BACK CHUCK

## TECHNICAL PARAMETERS

This product is an automatic chuck fixture mainly used in the CNC machine tools, replacing the traditional three-jaw chuck. It can quickly switch the elastic fixture to clamp the outer circle of workpiece with different diameters or cooperate with the modular clamping sleeve to expand the inner hole of workpiece, featuring high precision, high rotation speed, and reliable clamping, etc.

### Product features & advantages

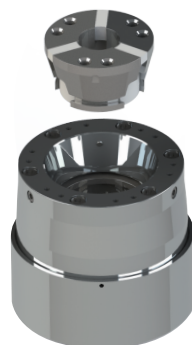
High rotation speed: The rotation speed is up to 5800rpm, effectively improving the surface quality of workpiece.

High precision: The precision of both clamping outer circle and expanding inner hole is less than 0.01mm;

Reliable clamping: Adopt the clamping method of one for clamping and one for fixing, with the minimum clamping length of 5mm.

High efficiency: Cooperate with the modular clamping sleeve and elastic fixture to realize quick switching between clamping outer circle and expanding inner hole.

Stable and reliable performance: The excellent surface treatment technology ensures good precision retention and long life.



## MAIN TECHNICAL PARAMETER

Product model	PBC-01-4/65-A2/5
(mm) Clamping accuracy	≤0.01
[ KN ] Cylinder maximum permissible tension	40
[ KN ] Maximum clamping force	100
[ rpm ] Limit speed	5800
[mm] Clamping outer diameter range of collet chuck	4-65

## SIZE CHART

