

# KR COLLET

## FEATURES

Made of special materials, the chuck has advantages of corrosion resistance, large clamping force, small deformation, stable precision and high wearing resistance; under the same locking force condition, its wearing resistance is better than that of SK chuck; therefore, it has a longer service life.

High precision: The radial run-out of Grade PP (instrument grade) is  $\leq 0.001$ , which is far higher than that of similar products in the market.

It has a smooth surface and bright appearance, which makes people feel comfortable when touching it.

Scope of application: It is widely used for boring, milling, drilling, tapping, grinding, engraving and other machining areas.

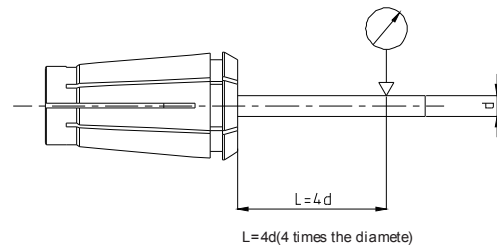
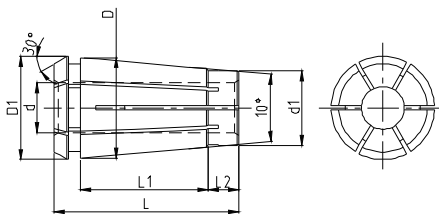
Generally, it is used together with the N.C. shank, and is suitable for a machining center with the relatively high speed.



Symbol of the Precision Grade	Precision Grade	( $\mu\text{m}$ ) Radial Run- out
PP	instrument grade	$\leq 1$
P	ultra precision grade	$\leq 2$
AA	precision grade	$\leq 5$
A	ordinary grade	$\leq 8$

## KR6-2.0

The accuracy shall be based on chuck integer.



## NAMING RULE:

### KR6-2.0

KR \_\_\_\_\_  
KR CHUCK CODE

REFERENCE DIAMETER/mm \_\_\_\_\_  
11 | 16 | 25 | 36

2.0:  $\phi 2$  CUTTER  
(THE CUTTER DIAMETER IS AN INTEGRAL:  
ONE DECIMAL)

# KR COLLET

## TECHNICAL PARAMETERS

Model	d(H7)	D	D1	d1	L	L1	L2
KR11	2.0~6.0	11	11.8	7.5	24	16	3.6
KR16	2.0~10.0	16	16.8	11.5	30	20.3	4.6
KR25	3.0~16.0	25	26.1	18.8	43	30	7.5
KR36	6.0~25.0	36	37.1	28	54	40	8

Chuck type	Model	( h 7 ) Cutter diameter (h7)	Chuck type	Model	( h 7 ) Cutter diameter (h7)	Chuck type	Model	( h 7 ) Cutter diameter (h7)	Chuck type	Model	( h 7 ) Cutter diameter (h7)
KR11	KR11- 2.0	2.0	KR16	KR16- 2.0	2.0	KR25	KR25- 3.0	3.0	KR36	KR36- 6.0	6.0
	KR11- 2.25	2.3		KR16- 2.25	2.3		KR25- 3.5	3.5		KR36- 8.0	8.0
	KR11- 2.5	2.5		KR16- 2.5	2.5		KR25- 4.0	4.0		KR36- 10.0	10.0
	KR11- 2.75	2.8		KR16- 2.75	2.8		KR25- 4.5	4.5		KR36- 12.0	12.0
	KR11- 3.0	3.0		KR16- 3.0	3.0		KR25- 5.0	5.0		KR36- 14.0	14.0
	KR11- 3.5	3.5		KR16- 3.5	3.5		KR25- 5.5	5.5		KR36- 16.0	16.0
	KR11- 4.0	4.0		KR16- 4.0	4.0		KR25- 6.0	6.0		KR36- 18.0	18.0
	KR11- 4.5	4.5		KR16- 4.5	4.5		KR25- 6.5	6.5		KR36- 20.0	20.0
KR11- 5.0	5.0	KR16- 5.0		5.0	KR25- 7.0		7.0	KR36- 22.0	22.0		
		KR16- 5.5		5.5	KR25- 7.5		7.5	KR36- 24.0	24.0		
		KR16- 6.0		6.0	KR25- 8.0		8.0				
		KR16- 6.5		6.5	KR25- 8.5		8.5				
		KR16- 7.0		7.0	KR25- 9.0		9.0				
		KR16- 7.5		7.5	KR25- 9.5		9.5				
		KR16- 8.0		8.0	KR25- 10.0		10.0				
		KR16- 8.5		8.5	KR25- 10.5		10.5				
				KR25- 11.0	11.0						
				KR25- 11.5	11.5						
				KR25- 12.0	12.0						
				KR25- 12.5	12.5						
				KR25- 13.0	13.0						
				KR25- 13.5	13.5						
				KR25- 14.0	14.0						
				KR25- 14.5	14.5						